

Datasheet for ABIN2565527
anti-FEN1 antibody (AA 1-380)



[Go to Product page](#)

1 Image

Overview

Quantity:	50 µg
Target:	FEN1
Binding Specificity:	AA 1-380
Reactivity:	Human
Host:	Mouse
Clonality:	Polyclonal
Conjugate:	This FEN1 antibody is un-conjugated
Application:	Western Blotting (WB)

Product Details

Purpose:	Mouse polyclonal antibody raised against a full-length human FEN1 protein.
Immunogen:	FEN1 (AAH00323, 1 a.a. ~ 380 a.a) full-length human protein.
Sequence:	MGIQGLAKLI ADVAPSAIRE NDIKSYFGRK VAIDASMSIY QFLIAVRQGG DVLQNEEGET TSHLMGMFYR TIRMMENGIK PVYVFDGKPP QLKSGELAKR SERRAEAEKQ LQQAQAAGAE QEVEKFTKRL VKVTKQHND ECKHLLSLMGI PYLDAPSEAE ASCAALVKAG KVYAAATEDM DCLTFGSPVL MRHLTASEAK KLPIQEFHLS RILQELGLNQ EQFVDLCILL GSDYCESIRG IGPKRAVDLI QKHKSIEIIV RRLDPNKYPV PENWLHKEAH QLFLEPEVLD PESVELKWSE PNEEELIKFM CGEKQFSEER IRSGVKRLSK SRQGSTQGRL DDFFKVTGSL SSAKRKEPEP KGSTKKKAKT GAAGKFKRGK
Cross-Reactivity:	Human
Characteristics:	Antibody reactive against mammalian transfected lysate.

Target Details

Target:	FEN1
Alternative Name:	FEN1 (FEN1 Products)
Background:	Full Gene Name: flap structure-specific endonuclease 1 Synonyms: FEN-1,MF1,RAD2
Gene ID:	2237
Pathways:	Telomere Maintenance , DNA Damage Repair , DNA Replication , Synthesis of DNA

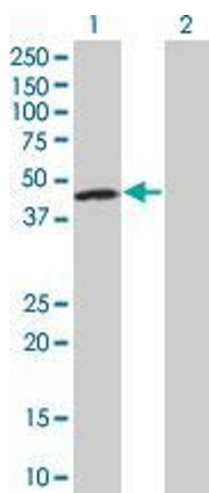
Application Details

Application Notes:	Optimal working dilution should be determined by the investigator.
Restrictions:	For Research Use only

Handling

Buffer:	In 1x PBS, pH 7.4
Storage:	-20 °C
Storage Comment:	Store at -20°C or lower. Aliquot to avoid repeated freezing and thawing.

Images



Western Blotting

Image 1. Western Blot analysis of FEN1 expression in transfected 293T cell line by FEN1 MaxPab polyclonal antibody.

Lane 1: FEN1 transfected lysate(41.8 KDa).

Lane 2: Non-transfected lysate.