

Datasheet for ABIN2565528

## anti-Fibrinogen beta Chain antibody (AA 392-491)



[Go to Product page](#)

### 4 Images

#### Overview

Quantity:	100 µg
Target:	Fibrinogen beta Chain (FGB)
Binding Specificity:	AA 392-491
Reactivity:	Human
Host:	Mouse
Clonality:	Monoclonal
Conjugate:	This Fibrinogen beta Chain antibody is un-conjugated
Application:	Western Blotting (WB), ELISA

#### Product Details

Purpose:	Mouse monoclonal antibody raised against a partial recombinant FGB.
Immunogen:	FGB (NP_005132, 392 a.a. ~ 491 a.a) partial recombinant protein with GST tag. MW of the GST tag alone is 26 KDa.
Sequence:	GENRTMTIHN GMFFSTYDRD NDGWLTS DPR KQCSKEDGGG WWYNRCHAAN PNGRYYWGGQ YTWDMAKHGT DDGVVWMNWK GSWYSMRKMS MKIRPFFPQQ
Clone:	1D7
Isotype:	IgG2a
Cross-Reactivity:	Human, Rat
Characteristics:	Antibody Reactive Against Recombinant Protein.

## Target Details

Target:	Fibrinogen beta Chain (FGB)
Alternative Name:	FGB ( <a href="#">FGB Products</a> )
Background:	Full Gene Name: fibrinogen beta chain Synonyms: MGC104327,MGC120405
Gene ID:	2244
NCBI Accession:	<a href="#">NM_005141</a>

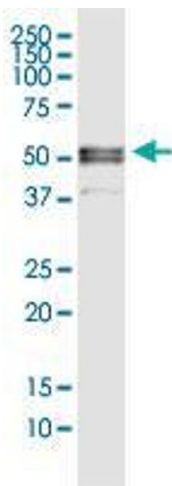
## Application Details

Application Notes:	Optimal working dilution should be determined by the investigator.
Restrictions:	For Research Use only

## Handling

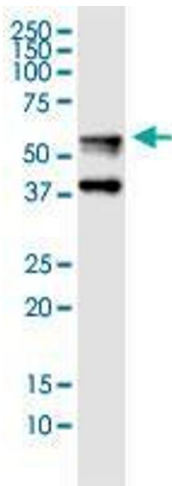
Buffer:	In 1x PBS, pH 7.4
Storage:	-20 °C
Storage Comment:	Store at -20°C or lower. Aliquot to avoid repeated freezing and thawing.

## Images



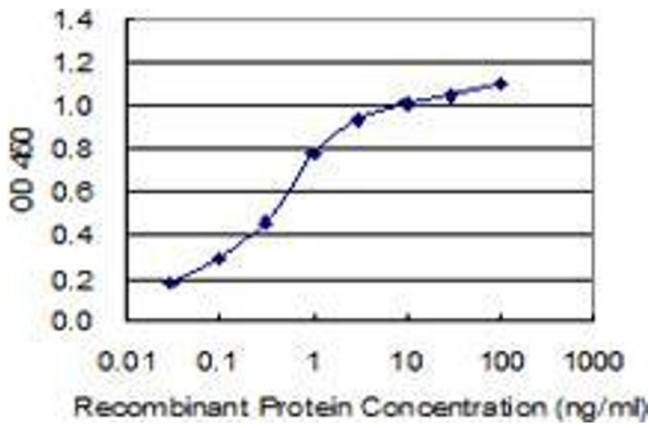
### Western Blotting

**Image 1.** FGB monoclonal antibody (M01), clone 1D7.  
Western Blot analysis of FGB expression in PC-12.



### Western Blotting

**Image 2.** FGB monoclonal antibody (M01), clone 1D7. Western Blot analysis of FGB expression in HepG2.



### ELISA

**Image 3.** Detection limit for recombinant GST tagged FGB is 0.3 ng/ml as a capture antibody.

Please check the [product details page](#) for more images. Overall 4 images are available for ABIN2565528.