



[Go to Product page](#)

Datasheet for ABIN2565532
anti-FHL3 antibody (AA 1-280)

2 Images

Overview

Quantity:	50 µg
Target:	FHL3
Binding Specificity:	AA 1-280
Reactivity:	Human
Host:	Mouse
Clonality:	Polyclonal
Conjugate:	This FHL3 antibody is un-conjugated
Application:	Western Blotting (WB), Immunofluorescence (IF)

Product Details

Purpose:	Mouse polyclonal antibody raised against a full-length human FHL3 protein.
Immunogen:	FHL3 (NP_004459.2, 1 a.a. ~ 280 a.a) full-length human protein.
Sequence:	MSESFCAKC NESLYGRKYI QTDSGPYCVP CYDNTFANTC AECQQLIGHD SRELFYEDRH FHEGCFRCCR CQRSLADEPF TCQDSELLCN DCYCSAFSSQ CSACGETVMP GSRKLEYGGQ TWHEHCFLCS GCEQPLGSRF VFPDKGAHYC VPCYENKFAP RCARCSKTLT QGGVTYRDQP WHRECLVCTG CQTPLAGQQF TSRDEDPYCV ACFGELFAPK CSSCKRPIVG LGGGKYVSFE DRHWHHNCFS CARCSTSLVG QGFVPDGDQV LCQGCSQAGP
Cross-Reactivity:	Human
Characteristics:	Antibody reactive against mammalian transfected lysate.

Target Details

Target:	FHL3
Alternative Name:	FHL3 (FHL3 Products)
Background:	Full Gene Name: four and a half LIM domains 3 Synonyms: MGC19547,MGC23614,MGC8696,SLIM2
Gene ID:	2275
NCBI Accession:	NM_004468

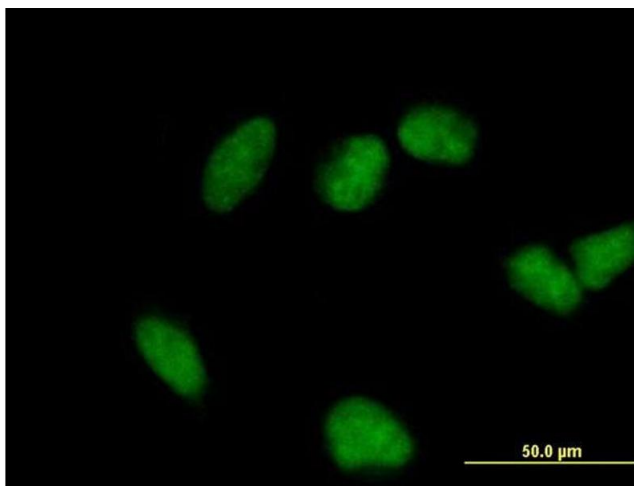
Application Details

Application Notes:	Optimal working dilution should be determined by the investigator.
Restrictions:	For Research Use only

Handling

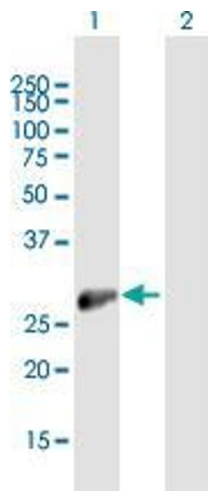
Buffer:	In 1x PBS, pH 7.4
Storage:	-20 °C
Storage Comment:	Store at -20°C or lower. Aliquot to avoid repeated freezing and thawing.

Images



Immunofluorescence

Image 1. Immunofluorescence of purified MaxPab antibody to FHL3 on HeLa cell. [antibody concentration 10 ug/ml]



Western Blotting

Image 2. Western Blot analysis of FHL3 expression in transfected 293T cell line by FHL3 MaxPab polyclonal antibody.

Lane 1: FHL3 transfected lysate(30.8 kDa).

Lane 2: Non-transfected lysate.