



[Go to Product page](#)

Datasheet for ABIN2565570  
**anti-GPR135 antibody (AA 391-493)**

4 Images

Overview

Quantity:	100 µg
Target:	GPR135
Binding Specificity:	AA 391-493
Reactivity:	Human
Host:	Mouse
Clonality:	Monoclonal
Conjugate:	This GPR135 antibody is un-conjugated
Application:	Western Blotting (WB), ELISA, Immunofluorescence (IF), Immunohistochemistry (Paraffin-embedded Sections) (IHC (p))

Product Details

Purpose:	Mouse monoclonal antibody raised against a partial recombinant GPR135.
Immunogen:	GPR135 (NP_072093, 391 a.a. ~ 493 a.a) partial recombinant protein with GST tag. MW of the GST tag alone is 26 KDa.
Sequence:	NPNISMLLGR NREEGYRTRN VDAFLPSQGP GLQARSRSRL RNRYANRLGA CNRMSSSNPA SGVAGDVAMW ARKNPVVLFV REGPPEPVTA VTKQPKSEAG DTS
Clone:	1H5
Isotype:	IgG1
Cross-Reactivity:	Human
Characteristics:	Antibody Reactive Against Recombinant Protein.

## Target Details

Target:	GPR135
Alternative Name:	GPR135 ( <a href="#">GPR135 Products</a> )
Background:	Full Gene Name: G protein-coupled receptor 135 Synonyms: HUMNPIIY20
Gene ID:	64582
NCBI Accession:	<a href="#">NM_022571</a>

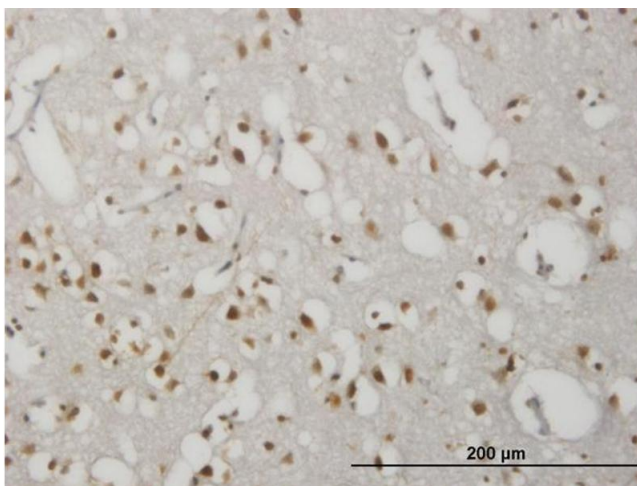
## Application Details

Application Notes:	Optimal working dilution should be determined by the investigator.
Restrictions:	For Research Use only

## Handling

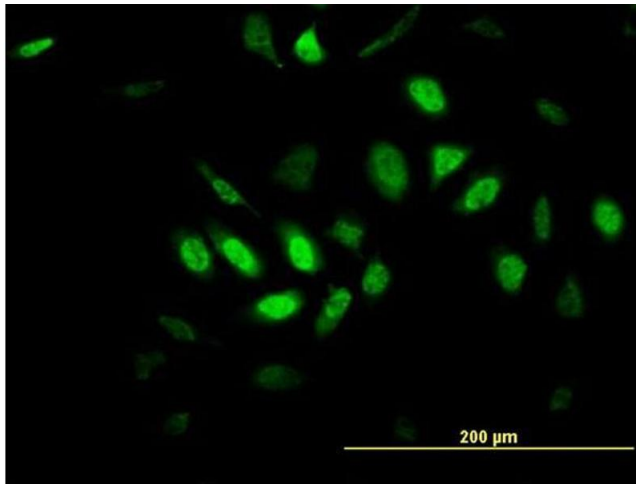
Buffer:	In 1x PBS, pH 7.4
Storage:	-20 °C
Storage Comment:	Store at -20°C or lower. Aliquot to avoid repeated freezing and thawing.

## Images



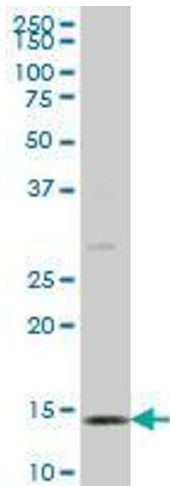
### Immunostaining

**Image 1.** Immunoperoxidase of monoclonal antibody to GPR135 on formalin-fixed paraffin-embedded human cerebral cortex. [antibody concentration 1.5 ug/ml]



### Immunofluorescence

**Image 2.** Immunofluorescence of monoclonal antibody to GPR135 on MCF-7 cell. [antibody concentration 10 ug/ml]



### Western Blotting

**Image 3.** GPR135 monoclonal antibody (M01), clone 1H5 Western Blot analysis of GPR135 expression in MCF-7 .

Please check the [product details page](#) for more images. Overall 4 images are available for ABIN2565570.