



[Go to Product page](#)

Datasheet for ABIN2565572  
**anti-GPRIN2 antibody (AA 1-461)**

1 Image

Overview

Quantity:	50 µg
Target:	GPRIN2
Binding Specificity:	AA 1-461
Reactivity:	Human
Host:	Mouse
Clonality:	Polyclonal
Conjugate:	This GPRIN2 antibody is un-conjugated
Application:	Western Blotting (WB)

Product Details

Purpose:	Mouse polyclonal antibody raised against a full-length human GPRIN2 protein.
Immunogen:	GPRIN2 (AAH11672.1, 1 a.a. ~ 461 a.a) full-length human protein.
Sequence:	MSSSHPEPGP WAPLSPRLQP LSQSSSSLLG EGREQRPELH KTASSTMWQA QLGEASTRPQ APEEEGNPPE SMKPARASGP KARPSAGGHW RSSTVGNVST MGGGDLCLRL APSAAAMQRS HSDLVRSTQM RGHSGARKAS LSCSALGSSP VHRAQLQPGG TSGQGGQAPA GLERDLAPED ETSNSAWMLG ASQLSVPLD LGDTTAHSSS AQAEPKAAEQ LATTTCHALP PAALLCGMRE MREVGAGGCC HALPATGILA FPKLVASVSE SGLQAQHGVK IHCRLSGGLP GSHHCCAHLW GPAGLVPEPG SRTKDVWTMT SANDLAPAEA SPLSAQDAGV QAAPVAACKA VATSPSLEAP AALHVFPEVT LGSSLEEAPS PVRDVRWDAE GMTWEVYGAA VDPEVLGVAI QKHLEMQFEQ LQRAPASEDS LSVEGRRGPL RAVMQSLRRP SCCGCSGAAP E
Cross-Reactivity:	Human

## Product Details

Characteristics: Antibody reactive against mammalian transfected lysate.

## Target Details

Target: GPRIN2

Alternative Name: GPRIN2 ([GPRIN2 Products](#))

Background: Full Gene Name: G protein regulated inducer of neurite outgrowth 2  
Synonyms: GRIN2,KIAA0514,MGC15171

Gene ID: 9721

## Application Details

Application Notes: Optimal working dilution should be determined by the investigator.

Restrictions: For Research Use only

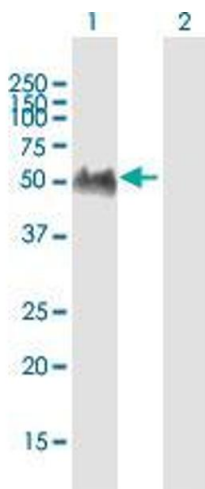
## Handling

Buffer: In 1x PBS, pH 7.4

Storage: -20 °C

Storage Comment: Store at -20°C or lower. Aliquot to avoid repeated freezing and thawing.

## Images



### Western Blotting

**Image 1.** Western Blot analysis of GPRIN2 expression in transfected 293T cell line by GPRIN2 MaxPab polyclonal antibody.

Lane 1: KIAA0514 transfected lysate(50.71 kDa).

Lane 2: Non-transfected lysate.