



[Go to Product page](#)

Datasheet for ABIN2565628
anti-IGLC2 antibody (AA 1-235)

1 Image

Overview

| | |
|----------------------|--------------------------------------|
| Quantity: | 50 µg |
| Target: | IGLC2 |
| Binding Specificity: | AA 1-235 |
| Reactivity: | Human |
| Host: | Mouse |
| Clonality: | Polyclonal |
| Conjugate: | This IGLC2 antibody is un-conjugated |
| Application: | Western Blotting (WB) |

Product Details

| | |
|-------------------|--|
| Purpose: | Mouse polyclonal antibody raised against a full-length human IGLC2 protein. |
| Immunogen: | IGLC2 (AAH93098.1, 1 a.a. ~ 235 a.a) full-length human protein. |
| Sequence: | MASFLLLLTL LTHCAGSWAQ SVLTQPPSAS GTPGQRVPIS CSGSSSNIGS NTVNWWYQQFP GTAPKLLIYS NNQRPSGVPD RFGSGSKSGTS ASLAISGLQS EDDAVYHCAT WDDNLNSWVF GGGTKLTVLS QPKAAPSVTL FPPSSEELQA NKATLVCLIS DFYPGAVTVA WKADSSPVKA GVETTTPSKQ SNNKYAASSY LSLTPEQWKS HKSYSQCQVTH EGSTVEKTVA PTECS |
| Cross-Reactivity: | Human |
| Characteristics: | Antibody reactive against mammalian transfected lysate. |

Target Details

| | |
|---------|-------|
| Target: | IGLC2 |
|---------|-------|

Target Details

| | |
|-------------------|--|
| Alternative Name: | IGLC2 (IGLC2 Products) |
| Background: | Full Gene Name: immunoglobulin lambda constant 2 (Kern-Oz- marker) Synonyms: IGLC,MGC20392,MGC45681 |
| Gene ID: | 3538 |

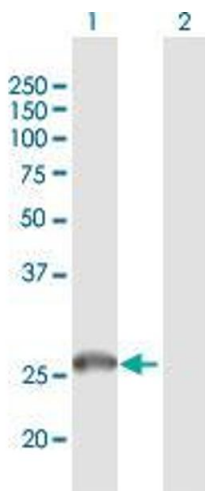
Application Details

| | |
|--------------------|--|
| Application Notes: | Optimal working dilution should be determined by the investigator. |
| Restrictions: | For Research Use only |

Handling

| | |
|------------------|--|
| Buffer: | In 1x PBS, pH 7.4 |
| Storage: | -20 °C |
| Storage Comment: | Store at -20°C or lower. Aliquot to avoid repeated freezing and thawing. |

Images



Western Blotting

Image 1. Western Blot analysis of IGLC2 expression in transfected 293T cell line by IGLC2 MaxPab polyclonal antibody.

Lane 1: IGLC2 transfected lysate(25.85 KDa).

Lane 2: Non-transfected lysate.