



[Go to Product page](#)

Datasheet for ABIN2565643  
**anti-ISG15 antibody (AA 1-165)**

2 Images

Overview

Quantity:	50 µg
Target:	ISG15
Binding Specificity:	AA 1-165
Reactivity:	Human
Host:	Mouse
Clonality:	Polyclonal
Conjugate:	This ISG15 antibody is un-conjugated
Application:	Western Blotting (WB)

Product Details

Purpose:	Mouse polyclonal antibody raised against a full-length human G1P2 protein.
Immunogen:	G1P2 (ENSP00000368699, 1 a.a. ~ 165 a.a) full-length human protein.
Sequence:	MGWDLTVKML AGNEFQVSLSSSMSVSELKA QITQKIGVHA FQQLAVHPS GVALQDRVPL ASQGLGPGST VLLVVDKDE PLSILVRNNK GRSSTYEVRL TQTV AHLKQQ VSGLEGVQDD LFWLTFEGKP LEDQLPLGEY GLKPLSTVFM NLRLRGGGTE PGGRS
Cross-Reactivity:	Human
Characteristics:	Antibody reactive against mammalian transfected lysate.

Target Details

Target:	ISG15
---------	-------

## Target Details

Alternative Name:	ISG15 ( <a href="#">ISG15 Products</a> )
Background:	Full Gene Name: ISG15 ubiquitin-like modifier Synonyms: G1P2,IFI15,UCRP
Gene ID:	9636
NCBI Accession:	<a href="#">NM_005101</a>

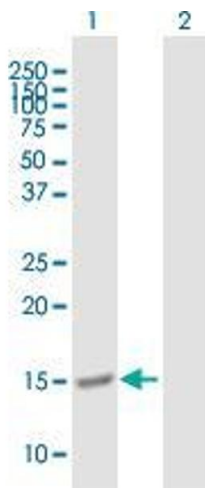
## Application Details

Application Notes:	Optimal working dilution should be determined by the investigator.
Restrictions:	For Research Use only

## Handling

Buffer:	In 1x PBS, pH 7.4
Storage:	-20 °C
Storage Comment:	Store at -20°C or lower. Aliquot to avoid repeated freezing and thawing.

## Images

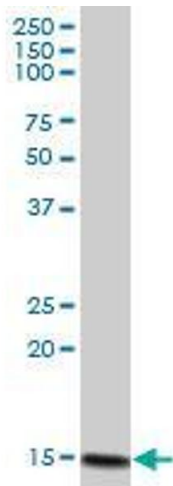


### Western Blotting

**Image 1.** Western Blot analysis of ISG15 expression in transfected 293T cell line by ISG15 MaxPab polyclonal antibody.

Lane 1: G1P2 transfected lysate(18.15 kDa).

Lane 2: Non-transfected lysate.



### Western Blotting

**Image 2.** G1P2 MaxPab polyclonal antibody. Western Blot analysis of G1P2 expression in human pancreas.