



Datasheet for ABIN2565650

## anti-Fetal Sulfoslycoprotein Antigen (FSA) (AA 1-191) antibody



[Go to Product page](#)

### 1 Image

#### Overview

Quantity:	50 µg
Target:	Fetal Sulfoslycoprotein Antigen (FSA)
Binding Specificity:	AA 1-191
Reactivity:	Human
Host:	Mouse
Clonality:	Polyclonal
Conjugate:	Un-conjugated
Application:	Western Blotting (WB)

#### Product Details

Purpose:	Mouse polyclonal antibody raised against a full-length human KIAA1109 protein.
Immunogen:	KIAA1109 (AAH45783.1, 1 a.a. ~ 191 a.a) full-length human protein.
Sequence:	MQLDFKSIHV QEPQEPSLQD ASLKPKVECS VVTEFTDHIC VTMDAELIMF LHDLVSAYLK EKEKAIFPPR ILSTRPGQKS PIIIHDDNSS DKDREDSITY TTVDWRDFMC NTWHLEPTLR LISWTGRKID PVGVVDYILQK LGFHHARTTI PKWLQRGVMD PLDKVLSVLI KKLGTALQDE KEKKGKDKEE H
Cross-Reactivity:	Human
Characteristics:	Antibody reactive against mammalian transfected lysate.

#### Target Details

Target:	Fetal Sulfoslycoprotein Antigen (FSA)
---------	---------------------------------------

## Target Details

Alternative Name:	KIAA1109 ( <a href="#">FSA Products</a> )
Background:	Full Gene Name: KIAA1109 Synonyms: DKFZp781P0474,FSA,MGC110967
Gene ID:	84162

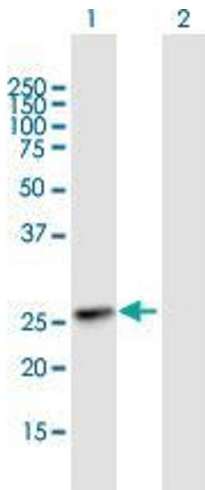
## Application Details

Application Notes:	Optimal working dilution should be determined by the investigator.
Restrictions:	For Research Use only

## Handling

Buffer:	In 1x PBS, pH 7.4
Storage:	-20 °C
Storage Comment:	Store at -20°C or lower. Aliquot to avoid repeated freezing and thawing.

## Images



### Western Blotting

**Image 1.** Western Blot analysis of KIAA1109 expression in transfected 293T cell line by KIAA1109 MaxPab polyclonal antibody.

Lane 1: KIAA1109 transfected lysate(21.01 kDa).

Lane 2: Non-transfected lysate.