

Datasheet for ABIN2565654
anti-KPTN antibody (AA 1-436)



[Go to Product page](#)

1 Image

Overview

Quantity:	50 µg
Target:	KPTN
Binding Specificity:	AA 1-436
Reactivity:	Human
Host:	Mouse
Clonality:	Polyclonal
Application:	Western Blotting (WB)

Product Details

Purpose:	Mouse polyclonal antibody raised against a full-length human KPTN protein.
Immunogen:	KPTN (NP_008990.2, 1 a.a. ~ 436 a.a) full-length human protein.
Sequence:	MMGEAAVAAG PCPLREDSFT RFSSQSNVYG LAGGAGGRGE LLAATLKGKV LGFRYQDLRQ KIRPVAKELQ FNYIPVDAEI VSIDTFNKSP PKRGLVVGIT FIKDSGDKGS PFLNIYCDYE PGSEYNLDSI AQSLNLELQ FTPFQLCHAE VQVGDQLETV FLLSGNDPAI HLYKENEGLH QFEEQPVENL FPELTNLTSS VLWLDVHNFP GTSRRLSALG CQSGYVRVAH VDQRSREVLQ MWSVLQDGPI SRVIVFSLSA AKETKDRPLQ DEYSVLVASM LEPAVVYRDL LNRGLEDQLL LPGSDQFDSV LCSLVTDVDL DGRPEVLVAT YGQELLCYKY RGPESGLPEA QHGFHLLWQR SFSSPLLAMA HVDLTGDGLQ ELAVVSLKGV HILQHSLIQA SELVTRLRH QVEQRRRLQ GLEDGAGAGP AENAAS
Cross-Reactivity:	Human
Characteristics:	Antibody reactive against mammalian transfected lysate.

Target Details

Target:	KPTN
Alternative Name:	KPTN (KPTN Products)
Background:	Full Gene Name: kaptin (actin binding protein) Synonyms: 2E4
Gene ID:	11133
NCBI Accession:	NM_007059
Pathways:	Sensory Perception of Sound

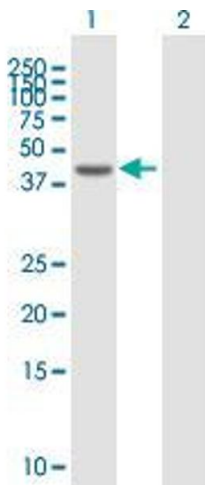
Application Details

Application Notes:	Optimal working dilution should be determined by the investigator.
Restrictions:	For Research Use only

Handling

Buffer:	In 1x PBS, pH 7.4
Storage:	-20 °C
Storage Comment:	Store at -20°C or lower. Aliquot to avoid repeated freezing and thawing.

Images



Western Blotting

Image 1. Western Blot analysis of KPTN expression in transfected 293T cell line by KPTN MaxPab polyclonal antibody.

Lane 1: KPTN transfected lysate(47.96 kDa).

Lane 2: Non-transfected lysate.