

Datasheet for ABIN2565659
anti-LAMa4 antibody (AA 1-120)

2 Images

[Go to Product page](#)

Overview

Quantity:	50 µg
Target:	LAMa4
Binding Specificity:	AA 1-120
Reactivity:	Human
Host:	Mouse
Clonality:	Polyclonal
Conjugate:	This LAMa4 antibody is un-conjugated
Application:	Western Blotting (WB), Proximity Ligation Assay (PLA)

Product Details

Purpose:	Mouse polyclonal antibody raised against a full-length human LAMA4 protein.
Immunogen:	LAMA4 (AAH04241, 1 a.a. ~ 120 a.a) full-length human protein.
Sequence:	MALSSAWRSV LPLWLLWSAA CSRAASGDDN AFPFDIEGSS AVGRQDPPET SEPRVALGRL PPAAEVQCPC HCHPAGAPAP PRAVPHSSFS LSPPLSSPQC LESFTWARSV RKLEIKSFPL
Cross-Reactivity:	Human
Characteristics:	Antibody reactive against mammalian transfected lysate.

Target Details

Target:	LAMa4
Alternative Name:	LAMA4 (LAMa4 Products)

Target Details

Background:	Full Gene Name: laminin, alpha 4 Synonyms: DKFZp686D23145,LAMA3,LAMA4*-1
Gene ID:	3910
Pathways:	Brown Fat Cell Differentiation

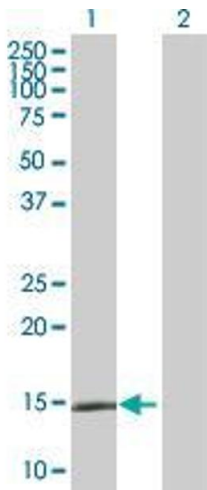
Application Details

Application Notes:	Optimal working dilution should be determined by the investigator.
Restrictions:	For Research Use only

Handling

Buffer:	In 1x PBS, pH 7.4
Storage:	-20 °C
Storage Comment:	Store at -20°C or lower. Aliquot to avoid repeated freezing and thawing.

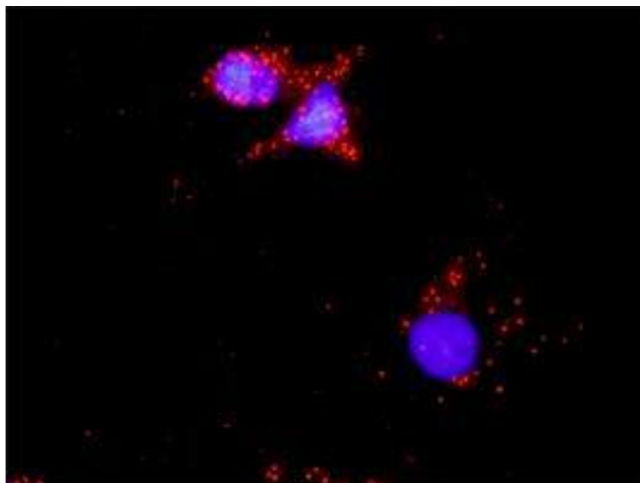
Images



Western Blotting

Image 1. Western Blot analysis of LAMA4 expression in transfected 293T cell line by LAMA4 MaxPab polyclonal antibody.

Lane 1: LAMA4 transfected lysate(13.31 KDa).
Lane 2: Non-transfected lysate.



Proximity Ligation Assay

Image 2. Proximity Ligation Analysis of protein-protein interactions between TP53 and LAMA4. HeLa cells were stained with anti-TP53 rabbit purified polyclonal 1:1200 and anti-LAMA4 mouse purified polyclonal antibody 1:50. Each red dot represents the detection of protein-protein interaction complex, and nuclei were counterstained with DAPI (blue).