



[Go to Product page](#)

Datasheet for ABIN2565680
anti-MAMLD1 antibody (AA 603-701)

2 Images

Overview

Quantity:	100 µg
Target:	MAMLD1
Binding Specificity:	AA 603-701
Reactivity:	Human
Host:	Mouse
Clonality:	Monoclonal
Conjugate:	This MAMLD1 antibody is un-conjugated
Application:	Western Blotting (WB), ELISA

Product Details

Purpose:	Mouse monoclonal antibody raised against a partial recombinant MAMLD1.
Immunogen:	MAMLD1 (NP_005482, 603 a.a. ~ 701 a.a) partial recombinant protein with GST tag. MW of the GST tag alone is 26 KDa.
Sequence:	SPSNITHVDK ACKLGEARHP QVSLGRQPPS CQALGSESFL PGSSFANELA RVTSSYSTSE AAPWGSWDPK AWRQVPAPLL PSCDATARGT EIRSYGNP
Clone:	4B4
Isotype:	IgG1
Cross-Reactivity:	Human
Characteristics:	Antibody Reactive Against Recombinant Protein.

Target Details

Target:	MAMLD1
Alternative Name:	MAMLD1 (MAMLD1 Products)
Background:	Full Gene Name: mastermind-like domain containing 1 Synonyms: CG1,CXorf6,F18
Gene ID:	10046
NCBI Accession:	NM_005491

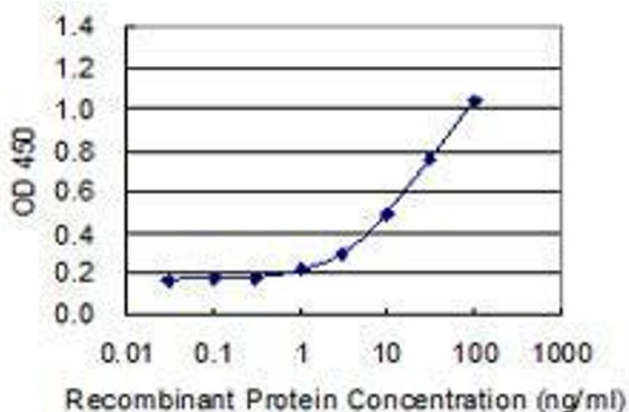
Application Details

Application Notes:	Optimal working dilution should be determined by the investigator.
Restrictions:	For Research Use only

Handling

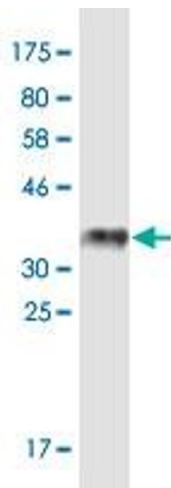
Buffer:	In 1x PBS, pH 7.4
Storage:	-20 °C
Storage Comment:	Store at -20°C or lower. Aliquot to avoid repeated freezing and thawing.

Images



ELISA

Image 1. Detection limit for recombinant GST tagged MAMLD1 is 0.3 ng/ml as a capture antibody.



Western Blotting

Image 2. Western Blot detection against Immunogen (36.63 kDa).