

Datasheet for ABIN2565686
anti-MARS2 antibody (AA 1-106)



[Go to Product page](#)

4 Images

Overview

Quantity:	100 µg
Target:	MARS2
Binding Specificity:	AA 1-106
Reactivity:	Human
Host:	Mouse
Clonality:	Monoclonal
Application:	Western Blotting (WB), ELISA

Product Details

Purpose:	Mouse monoclonal antibody raised against a partial recombinant MARS2.
Immunogen:	MARS2 (NP_612404, 1 a.a. ~ 106 a.a) partial recombinant protein with GST tag. MW of the GST tag alone is 26 KDa.
Sequence:	MLRTSVLRLLL GRTGASRLSL LEDFGPRYYSGSLSAGDDA CDVRAYFTTP IFYVNAAPHI GHLYSALLAD ALCRHRRLRG PSTAATRFST GTDEHGLKIQ QAAATA
Clone:	7C3
Isotype:	IgG2a
Cross-Reactivity:	Human
Characteristics:	Antibody Reactive Against Recombinant Protein.

Target Details

Target:	MARS2
Alternative Name:	MARS2 (MARS2 Products)
Background:	Full Gene Name: methionyl-tRNA synthetase 2, mitochondrial Synonyms: MetRS,mtMetRS
Gene ID:	92935
NCBI Accession:	NM_138395

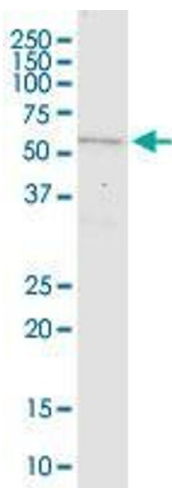
Application Details

Application Notes:	Optimal working dilution should be determined by the investigator.
Restrictions:	For Research Use only

Handling

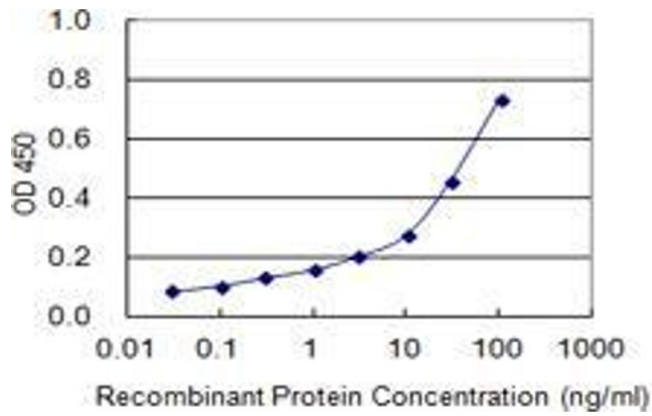
Buffer:	In 1x PBS, pH 7.4
Storage:	-20 °C
Storage Comment:	Store at -20°C or lower. Aliquot to avoid repeated freezing and thawing.

Images



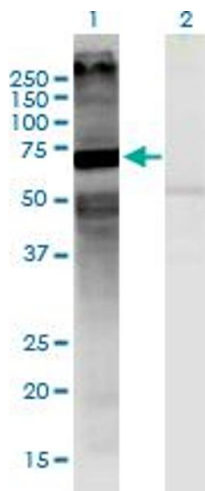
Western Blotting

Image 1. MARS2 monoclonal antibody (M03), clone 7C3.
Western Blot analysis of MARS2 expression in MCF-7.



ELISA

Image 2. Detection limit for recombinant GST tagged MARS2 is 0.1 ng/ml as a capture antibody.



Western Blotting

Image 3. Western Blot analysis of MARS2 expression in transfected 293T cell line by MARS2 monoclonal antibody (M03), clone 7C3. Lane 1: MARS2 transfected lysate (Predicted MW: 66.6 kDa). Lane 2: Non-transfected lysate.

Please check the [product details page](#) for more images. Overall 4 images are available for ABIN2565686.