



[Go to Product page](#)

Datasheet for ABIN2565727

anti-Neuropeptide FF antibody (AA 1-116)

2 Images

Overview

Quantity:	100 µg
Target:	Neuropeptide FF (NPFF)
Binding Specificity:	AA 1-116
Reactivity:	Human
Host:	Mouse
Clonality:	Monoclonal
Conjugate:	This Neuropeptide FF antibody is un-conjugated
Application:	Western Blotting (WB), ELISA

Product Details

Purpose:	Mouse monoclonal antibody raised against a full-length recombinant NPFF.
Immunogen:	NPFF (AAI04235.1, 1 a.a. ~ 116 a.a) full-length recombinant protein with GST tag. MW of the GST tag alone is 26 KDa.
Sequence:	MVPQPPTTCP WKPVPSPCDL RVQGICPSSF PDTPLAQEED SEPLPPQDAQ TSGSLLHYLL QAMERPGRSQ AFLFQPQRFQ RNTQGSWRNE WLSPRAGEGL NSQFWSLAAP QRFQKK
Clone:	7F12
Isotype:	IgG2a
Cross-Reactivity:	Human
Characteristics:	Antibody Reactive Against Recombinant Protein.

Target Details

Target:	Neuropeptide FF (NPFF)
Alternative Name:	NPFF (NPFF Products)
Background:	Full Gene Name: neuropeptide FF-amide peptide precursor Synonyms: FMRFAL
Gene ID:	8620

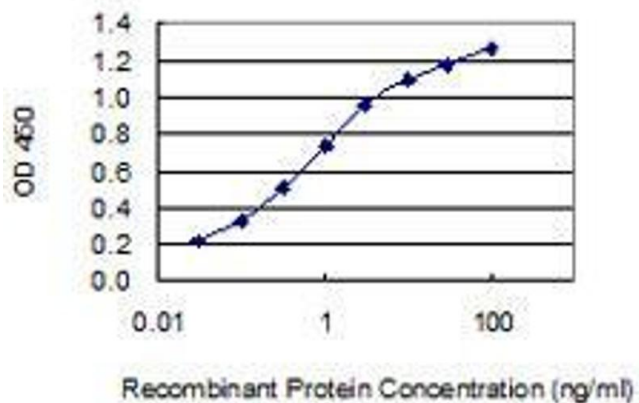
Application Details

Application Notes:	Optimal working dilution should be determined by the investigator.
Restrictions:	For Research Use only

Handling

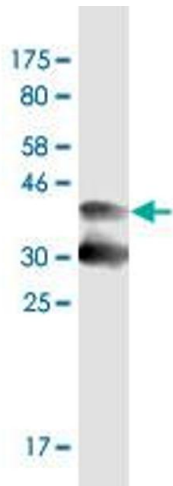
Buffer:	In 1x PBS, pH 7.4
Storage:	-20 °C
Storage Comment:	Store at -20°C or lower. Aliquot to avoid repeated freezing and thawing.

Images



ELISA

Image 1. Detection limit for recombinant GST tagged NPFF is 0.03 ng/ml as a capture antibody.



Western Blotting

Image 2. Western Blot detection against Immunogen (39.4 kDa).