

Datasheet for ABIN2565861

**RP6-213H19.1 (Human) IP-WB Antibody Pair**[Go to Product page](#)**1** Image

## Overview

Quantity:	1 set
Target:	STK26/MST4 (MST4)
Reactivity:	Human
Host:	Rabbit, Mouse
Application:	Immunoprecipitation (IP)

## Product Details

Purpose:	This IP-WB antibody pair set comes with one antibody for immunoprecipitation and another to detect the precipitated protein in western blot.
Cross-Reactivity:	Human
Characteristics:	This IP-WB antibody pair set comes with one antibody for immunoprecipitation and another to detect the precipitated protein in western blot.
Components:	Antibody pair set content: 1. Antibody pair for IP: rabbit polyclonal anti-RP6-213H19.1 (300 µL) 2. Antibody pair for WB: mouse purified polyclonal anti-RP6-213H19.1 (50 µg)

## Target Details

Target:	STK26/MST4 (MST4)
Alternative Name:	RP6-213H19.1 ( <a href="#">MST4 Products</a> )
Background:	Full Gene Name: serine/threonine protein kinase MST4 Synonyms: MASK,MST4

Target Details

Gene ID: 51765

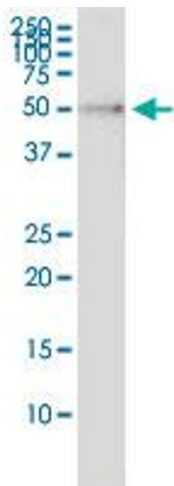
Application Details

Application Notes:	Optimal working dilution should be determined by the investigator.
Restrictions:	For Research Use only

Handling

Storage:	-20 °C
Storage Comment:	Store reagents of the antibody pair set at -20°C or lower. Please aliquot to avoid repeated freeze thaw cycle. Reagents should be returned to -20°C storage immediately after use.

Images



**Immunoprecipitation**

**Image 1.** Immunoprecipitation of RP6-213H19.1 transfected lysate using rabbit polyclonal anti-RP6-213H19.1 and Protein A Magnetic Bead ( U0007 ), and immunoblotted with mouse purified polyclonal anti-RP6-213H19.1.