



[Go to Product page](#)

Datasheet for ABIN2565862
anti-RPL36 antibody (AA 1-105)

1 Image

Overview

Quantity:	50 µL
Target:	RPL36
Binding Specificity:	AA 1-105
Reactivity:	Human
Host:	Mouse
Clonality:	Polyclonal
Conjugate:	This RPL36 antibody is un-conjugated
Application:	Western Blotting (WB), ELISA

Product Details

Purpose:	Mouse polyclonal antibody raised against a partial recombinant RPL36.
Immunogen:	RPL36 (NP_378669, 1 a.a. ~ 105 a.a) partial recombinant protein with GST tag.
Sequence:	MALRYPMAVG LNKGHKVTKN VSKPRHSRRR GRLTKHTKFV RDMIREVCGF APYERRAMEL LKVSKDKRAL KFIKKRVGTH IRAKRKREEL SNVLAAMRKA AAKKD
Cross-Reactivity:	Human
Characteristics:	Antibody Reactive Against Recombinant Protein.

Target Details

Target:	RPL36
Alternative Name:	RPL36 (RPL36 Products)

Target Details

Background: Full Gene Name: ribosomal protein L36
Synonyms: DKFZp566B023

Gene ID: 25873

NCBI Accession: [NM_033643](#)

Pathways: [SARS-CoV-2 Protein Interactome](#)

Application Details

Application Notes: Optimal working dilution should be determined by the investigator.

Restrictions: For Research Use only

Handling

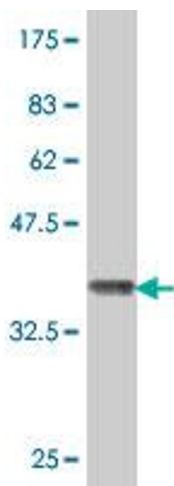
Format: Liquid

Buffer: 50 % glycerol

Storage: -20 °C

Storage Comment: Store at -20°C or lower. Aliquot to avoid repeated freezing and thawing.

Images



Western Blotting

Image 1. Western Blot detection against Immunogen (37.66 KDa).