

Datasheet for ABIN2565876

**anti-Mammaglobin A antibody (AA 1-93)****3** Images[Go to Product page](#)

## Overview

Quantity:	100 µg
Target:	Mammaglobin A (SCGB2A2)
Binding Specificity:	AA 1-93
Reactivity:	Human
Host:	Mouse
Clonality:	Monoclonal
Conjugate:	This Mammaglobin A antibody is un-conjugated
Application:	Western Blotting (WB), ELISA

## Product Details

Purpose:	Mouse monoclonal antibody raised against a full-length recombinant SCGB2A2.
Immunogen:	SCGB2A2 (NP_002402.1, 1 a.a. ~ 93 a.a) full-length recombinant protein with GST tag. MW of the GST tag alone is 26 KDa.
Sequence:	MKLLMVLMLA ALSQHCYAGS GCPLLENVIS KTINPVQVSKT EYKELLQEFI DDNATTNAID ELKECFNLQT DETLSNVEVF MQLIYDSSLC DLF
Clone:	3A4
Isotype:	IgG2a
Cross-Reactivity:	Human
Characteristics:	Antibody Reactive Against Recombinant Protein.

Target Details

Target:	Mammaglobin A (SCGB2A2)
Alternative Name:	SCGB2A2 ( <a href="#">SCGB2A2 Products</a> )
Background:	Full Gene Name: secretoglobin, family 2A, member 2 Synonyms: MGB1,MGC71974,UGB2
Gene ID:	4250
NCBI Accession:	<a href="#">NM_002411</a>

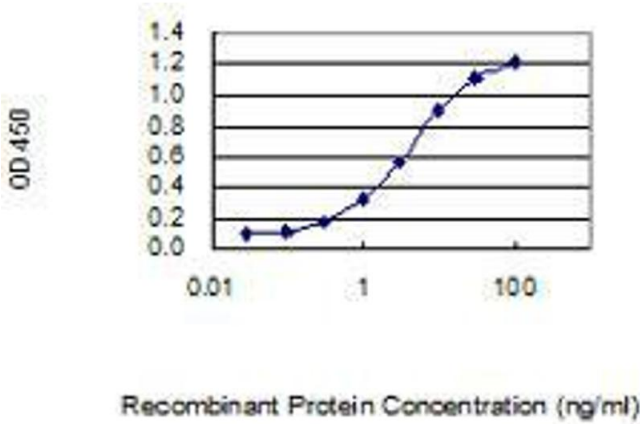
Application Details

Application Notes:	Optimal working dilution should be determined by the investigator.
Restrictions:	For Research Use only

Handling

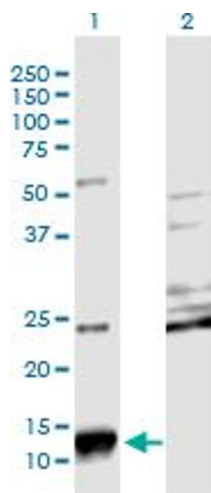
Buffer:	In 1x PBS, pH 7.4
Storage:	-20 °C
Storage Comment:	Store at -20°C or lower. Aliquot to avoid repeated freezing and thawing.

Images



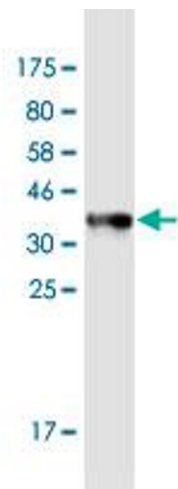
ELISA

**Image 1.** Detection limit for recombinant GST tagged SCGB2A2 is 0.1 ng/ml as a capture antibody.



#### Western Blotting

**Image 2.** Western Blot analysis of SCGB2A2 expression in transfected 293T cell line by SCGB2A2 monoclonal antibody (M08), clone 3A4. Lane 1: SCGB2A2 transfected lysate (Predicted MW: 10.5 kDa). Lane 2: Non-transfected lysate.



#### Western Blotting

**Image 3.** Western Blot detection against Immunogen (35.86 kDa).