

Datasheet for ABIN2565888  
**anti-SFTPB antibody (AA 1-381)**



[Go to Product page](#)

3 Images

## Overview

Quantity:	100 µg
Target:	SFTPB
Binding Specificity:	AA 1-381
Reactivity:	Human
Host:	Mouse
Clonality:	Monoclonal
Conjugate:	This SFTPB antibody is un-conjugated
Application:	Western Blotting (WB), ELISA

## Product Details

Purpose:	Mouse monoclonal antibody raised against a full-length recombinant SFTPB.
Immunogen:	SFTPB (NP_000533.2, 1 a.a. ~ 381 a.a) full-length recombinant protein with GST tag. MW of the GST tag alone is 26 KDa.
Sequence:	MAESHLLQWL LLLLPTLCGP GTAAWTTSSL ACAQGPEFWC QSLEQALQCR ALGHCLQEVM GHVGADDLCQ ECEDIVHILN KMAKEAIFQD TMRKFLEQEC NVLPLKLLMP QCNQVLDYF PLVIDYFQNN TDSNGICMHL GLCKSRQPEP EQEPGMSDPL PKPLRDPLPD PLLDKLVLPV LPGALQARPG PHTQDLSEQQ FPIPLPYCWL CRALIKRIQA MIPKGALAVA VAQVCRVVPL VAGGICQCLA ERYSVILLDT LLGRMLPQLV CRLVLRCSMD DSAGPRSPTG EWLPRDSECH LCMSVTTQAG NSSEQAIPQA MLQACVGSWL DREKCKQFVE QHTPQLLLTV PRGWDAAHTTC QALGVCGTMS SPLQCIHSPD L
Clone:	1H7

## Product Details

---

Isotype:	IgG2a
Cross-Reactivity:	Human
Characteristics:	Antibody Reactive Against Recombinant Protein.

## Target Details

---

Target:	SFTPB
Alternative Name:	SFTPB ( <a href="#">SFTPB Products</a> )
Background:	Full Gene Name: surfactant protein B Synonyms: PSP-B,SFTB3,SFTP3,SMDP1,SP-B
Gene ID:	6439
NCBI Accession:	<a href="#">NM_000542</a>

## Application Details

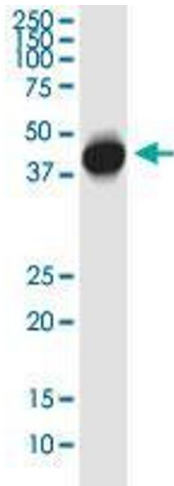
---

Application Notes:	Optimal working dilution should be determined by the investigator.
Restrictions:	For Research Use only

## Handling

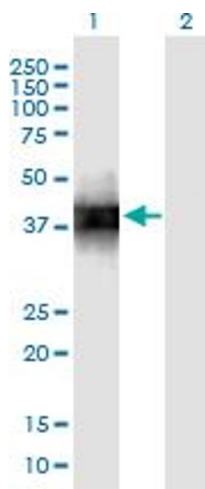
---

Buffer:	In 1x PBS, pH 7.4
Storage:	-20 °C
Storage Comment:	Store at -20°C or lower. Aliquot to avoid repeated freezing and thawing.



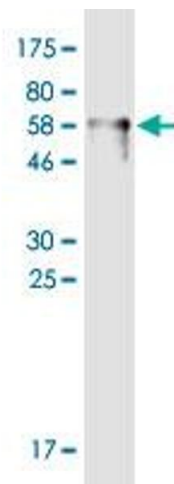
#### Western Blotting

**Image 1.** SFTPb monoclonal antibody (M01), clone 1H7. Western Blot analysis of SFTPb expression in human lung cancer.



#### Western Blotting

**Image 2.** Western Blot analysis of SFTPb expression in transfected 293T cell line by SFTPb monoclonal antibody (M01), clone 1H7. Lane 1: SFTPb transfected lysate (Predicted MW: 42.1 kDa). Lane 2: Non-transfected lysate.



#### Western Blotting

**Image 3.** Western Blot detection against Immunogen (68.5 kDa).