

Datasheet for ABIN2565900
anti-SLC25A27 antibody (AA 1-245)[Go to Product page](#)

1 Image

Overview

Quantity:	50 µg
Target:	SLC25A27
Binding Specificity:	AA 1-245
Reactivity:	Human
Host:	Mouse
Clonality:	Polyclonal
Conjugate:	This SLC25A27 antibody is un-conjugated
Application:	Western Blotting (WB)

Product Details

Purpose:	Mouse polyclonal antibody raised against a full-length human SLC25A27 protein.
Immunogen:	SLC25A27 (AAH33091, 1 a.a. ~ 245 a.a) full-length human protein.
Sequence:	MSVPEEEERL LPLTQRWPRA SKFLLSGCAA TVAELATFPL DLTCTRLQMQ GEAALARLGD GARESAPYRG MVRTALGIE EEGFLKLWQG VTPAIYRHVV YSGGRMVTYE HLREVVFGKS EDEHYPLWKS VIGGMMAGVI GQFLVNPTDL VKVQMOMEK RKLEGKPLRF RGVHHAFKI LAEGGIRGLW AGWVPNIQRA ALVNMGDLTT YDTVKHYLVL NTPLEDNIMT HGLSSDLVGS HKAIQ
Cross-Reactivity:	Human
Characteristics:	Antibody reactive against mammalian transfected lysate.

Target Details

Target:	SLC25A27
---------	----------

Target Details

Alternative Name:	SLC25A27 (SLC25A27 Products)
Background:	Full Gene Name: solute carrier family 25, member 27 Synonyms: FLJ33552,UCP4
Gene ID:	9481

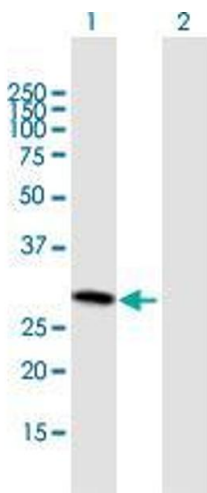
Application Details

Application Notes:	Optimal working dilution should be determined by the investigator.
Restrictions:	For Research Use only

Handling

Buffer:	In 1x PBS, pH 7.4
Storage:	-20 °C
Storage Comment:	Store at -20°C or lower. Aliquot to avoid repeated freezing and thawing.

Images



Western Blotting

Image 1. Western Blot analysis of SLC25A27 expression in transfected 293T cell line by SLC25A27 MaxPab polyclonal antibody.

Lane 1: SLC25A27 transfected lysate(27.06 KDa).
Lane 2: Non-transfected lysate.