



## Datasheet for ABIN2566024 anti-LCP2 antibody (AA 1-533)



[Go to Product page](#)

### 1 Image

#### Overview

Quantity:	50 µg
Target:	LCP2
Binding Specificity:	AA 1-533
Reactivity:	Human
Host:	Mouse
Clonality:	Polyclonal
Conjugate:	This LCP2 antibody is un-conjugated
Application:	Western Blotting (WB)

#### Product Details

Purpose:	Mouse polyclonal antibody raised against a full-length human LCP2 protein.
Immunogen:	LCP2 (NP_005556, 1 a.a. ~ 533 a.a) full-length human protein.
Sequence:	MALRNVPFRS EVLGWDPDSL ADYFKKLNKY DCEKAVKKYH IDGARFLNLT ENDIQKFPKL RVPILSKLSQ EINKNEERRS IFTRKPQVPR FPEETESHEE DNGGWSSFEE DDYESPNDDQ DGEDDGDYES PNEEEEAPVE DDADYEPPPS NDEEALQNSI LPAKPFPSNSN SMYIDRPPSG KTPQQPPVPP QRPMAALPPP PAGRNHSPLP PPQTNHEEPS RSRNHKTAKL PAPSIDRSTK PPLDRSLAPF DREPFTLGKK PPFSDKPSIP AGRSLGEHLP KIQKPPLPPT TERHERSSPL PGKKPPVPKH GWGPDRREND EDDVHQRPLP QPALLPMSSN TFPSRSTKPS PMNPLPSSHM PGAFSESNSP FPQSASLPPY FSQGSPNRPP IRAEGRNFPL PLPNKPRPPS PAEEENSLNE EWYVSYITRP EAEAALRKIN QDGTFLVRDS SKKTTTNPYV LMLYKDKVY NIQIRYQKES QVYLLGTGLR GKEDFLSVSD IIDYFRKMPL LLIDGKNRGS RYQCTLTHAA GYP

## Product Details

---

Cross-Reactivity:	Human
Characteristics:	Antibody reactive against mammalian transfected lysate.

## Target Details

---

Target:	LCP2
Alternative Name:	LCP2 ( <a href="#">LCP2 Products</a> )
Background:	Full Gene Name: lymphocyte cytosolic protein 2 (SH2 domain containing leukocyte protein of 76 kDa) Synonyms: SLP-76,SLP76
Gene ID:	3937
NCBI Accession:	<a href="#">NM_005565</a>
Pathways:	<a href="#">TCR Signaling</a> , <a href="#">Fc-epsilon Receptor Signaling Pathway</a>

## Application Details

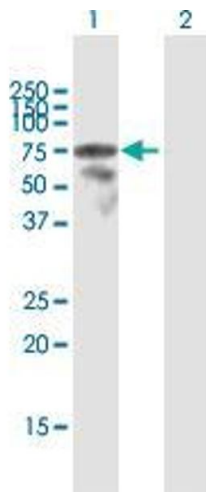
---

Application Notes:	Optimal working dilution should be determined by the investigator.
Restrictions:	For Research Use only

## Handling

---

Buffer:	In 1x PBS, pH 7.4
Storage:	-20 °C
Storage Comment:	Store at -20°C or lower. Aliquot to avoid repeated freezing and thawing.



### Western Blotting

**Image 1.** Western Blot analysis of LCP2 expression in transfected 293T cell line by LCP2 MaxPab polyclonal antibody.

Lane 1: LCP2 transfected lysate(58.63 KDa).

Lane 2: Non-transfected lysate.