



[Go to Product page](#)

Datasheet for ABIN2566028
anti-METTL4 antibody (AA 1-472)

1 Image

Overview

Quantity:	50 µg
Target:	METTL4
Binding Specificity:	AA 1-472
Reactivity:	Human
Host:	Mouse
Clonality:	Polyclonal
Conjugate:	This METTL4 antibody is un-conjugated
Application:	Western Blotting (WB)

Product Details

Purpose:	Mouse polyclonal antibody raised against a full-length human METTL4 protein.
Immunogen:	METTL4 (NP_073751.2, 1 a.a. ~ 472 a.a) full-length human protein.
Sequence:	MSVHQLSAG WLLDHLFSIN KINYQLHQHH EPCCRKKEFT TSVHFESLQM DSVSSSGVCA AFIASDSSTK PENDDGGNYE MFTRKVFVRP ELFDVTKPYI TPAVHKECQQ SNEKEDLMNG VKKEISISII GKRRKRCVVF NQGELDAMEY HTKIRELILD GSLQLIQEGL KSGFLYPLFE KQDKGSKPIT LPLDACSLSE LCEMAKHLPS LNEMEHQTLQ LVEEDTSVTE QDLFLRVVEN NSSFTKVITL MGQKYLLPPK SSFLLSDISC MQPLLNYRKT FDVIDIDPPW QNKSVKRSNR YSYLSPLQIQ QIPIPKLAAP NCLLVTWVTN RQKHLRFIKE ELYPSWSVEV VAEWHWVKIT NSGEFVPLD SPHKKPYEGL ILGRVQEKA LPLRNADVNV LPIPDHKLIV SVPCTLHSHK PPLAEVLKDY IKPDGEYLEL FARNLQPGWT SWGNEVLKFQ HVDYFIALES GS
Cross-Reactivity:	Human

Product Details

Characteristics: Antibody reactive against mammalian transfected lysate.

Target Details

Target: METTL4

Alternative Name: METTL4 ([METTL4 Products](#))

Background: Full Gene Name: methyltransferase like 4
Synonyms: FLJ23017,HsT661,MGC117235

Gene ID: 64863

NCBI Accession: [NM_022840](#)

Application Details

Application Notes: Optimal working dilution should be determined by the investigator.

Restrictions: For Research Use only

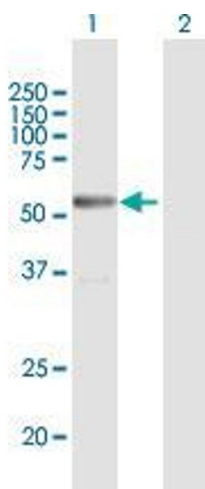
Handling

Buffer: In 1x PBS, pH 7.4

Storage: -20 °C

Storage Comment: Store at -20°C or lower. Aliquot to avoid repeated freezing and thawing.

Images



Western Blotting

Image 1. Western Blot analysis of METTL4 expression in transfected 293T cell line by METTL4 MaxPab polyclonal antibody.

Lane1:METTL4 transfected lysate(51.92 KDa).

Lane2:Non-transfected lysate.