



[Go to Product page](#)

Datasheet for ABIN2566040
anti-POLD3 antibody (AA 1-466)

1 Image

Overview

Quantity:	50 µg
Target:	POLD3
Binding Specificity:	AA 1-466
Reactivity:	Human
Host:	Mouse
Clonality:	Polyclonal
Conjugate:	This POLD3 antibody is un-conjugated
Application:	Western Blotting (WB)

Product Details

Purpose:	Mouse polyclonal antibody raised against a full-length human POLD3 protein.
Immunogen:	POLD3 (NP_006582.1, 1 a.a. ~ 466 a.a) full-length human protein.
Sequence:	MADQLYLENI DEFVTDQNKI VTYKWLSYTL GVHVNQAKQM LYDYVERKRK ENSGAQLHVT YLVSGSLIQN GHSCHKVAVV REDKLEAVKS KLAVTASIHV YSIQKAMLKD SGPLFNTDYY ILKSNLQNC S KFSAIQCAA VPRAPAESS SSKKFEQSHL HMSSETQANN ELTTNGHGPP ASKQVSQPK GIMGMFASKA AAKTQETNKE TKTEAKEVTN ASAAGNKAPG KGNMMSNFFG KAAMNKFVN LDSEQAVKEE KIVEQPTVSV TEPKLATPAG LKKSSKKAEP VKVLQKEKKR GKRVALSDDE TKETENMRKK RRRIKLPESD SSEDEVFPDS PGAYEAESPS PPPPPSPPLE PVPKTEPEPP SVKSSSGENK RKRKRVLKSK TYLDGEGCIV TEKVYESESC TDSEEELNMK TSSVHRPPAM TVKKEPREER KGPCKGTAAL GKANRQVSIT GFFQRK
Cross-Reactivity:	Human

Product Details

Characteristics: Antibody reactive against mammalian transfected lysate.

Target Details

Target: POLD3

Alternative Name: POLD3 ([POLD3 Products](#))

Background: Full Gene Name: polymerase (DNA-directed), delta 3, accessory subunit
Synonyms: KIAA0039,MGC119642,MGC119643,P66,P68

Gene ID: 10714

NCBI Accession: [NM_006591](#)

Pathways: [Telomere Maintenance](#), [DNA Damage Repair](#), [DNA Replication](#), [Synthesis of DNA](#)

Application Details

Application Notes: Optimal working dilution should be determined by the investigator.

Restrictions: For Research Use only

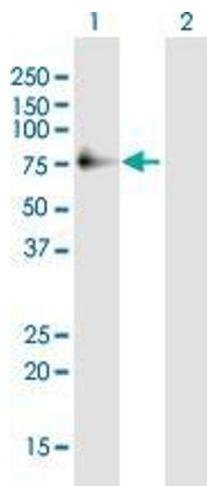
Handling

Buffer: In 1x PBS, pH 7.4

Storage: -20 °C

Storage Comment: Store at -20°C or lower. Aliquot to avoid repeated freezing and thawing.

Images



Western Blotting

Image 1. Western Blot analysis of POLD3 expression in transfected 293T cell line by POLD3 MaxPab polyclonal antibody.

Lane 1: POLD3 transfected lysate(51.40 kDa).

Lane 2: Non-transfected lysate.