



[Go to Product page](#)

Datasheet for ABIN2566101

LILRA2 Protein (AA 1-466) (GST tag)

1 Image

Overview

Quantity:	10 µg
Target:	LILRA2
Protein Characteristics:	AA 1-466
Origin:	Human
Source:	Wheat germ
Protein Type:	Recombinant
Purification tag / Conjugate:	This LILRA2 protein is labelled with GST tag.
Application:	Western Blotting (WB), ELISA, Affinity Purification (AP), Antibody Array (AA)

Product Details

Purpose:	LILRA2 (Human) Recombinant Protein (P01)
Sequence:	<p>MTPILTVLIC LGLSLGPRTH VQAGHLPKPT LWAEPGSVII QGSPVTLRCQ GSLQAEEYHL</p> <p>YRENKSASWV RRIQEPGKNG QFPIPSIARE HAGRYHCQYY SHNHSSEYSD PLELVVTGAY</p> <p>GKPTLSALPS PVVTLGGNVT LQCVSQVAFD GFILCKEGED EHPQRLNSHS HARGWSWAIF</p> <p>SVGVPSPSRR WSYRCYAYDS NSPYVWSLPS DLLELLVPGV SKKPSLSVQP GPMVAPGESL</p> <p>TLQCVSDVGY DRFVLYKEGE RDFLQRPGWQ PQAGLSQANF TLGPVSPSHG GQYRCYSAHN</p> <p>LSSEWSAPSD PLDILITGQF YDRPSSLVQP VPTVAPGKNV TLLCQSRGQF HTFLLTKEGA</p> <p>GHPPLHLRSE HQAQQNAEF RMGPVTSAHV GTYRCYSSLS SNPYLLSLPS DPLELVVSAS</p> <p>LGQHPQDYTV ENLIRMGVAG LVLVVLGILL FEAQHSQRSL QDAAGR</p>
Characteristics:	Human LILRA2 full-length ORF (AAH27916.1, 1 a.a. - 466 a.a.) recombinant protein with GST tag at N-terminal.

Product Details

Purification: in vitro wheat germ expression system

Target Details

Target: LILRA2

Alternative Name: LILRA2 ([LILRA2 Products](#))

Background: Full Gene Name: leukocyte immunoglobulin-like receptor, subfamily A (with TM domain), member 2

Synonyms: CD85H,ILT1,LIR-7,LIR7

Gene ID: 11027

Application Details

Application Notes: Optimal working dilution should be determined by the investigator.

Comment: Preparation method: in vitro, wheat germ expression system
Product Quality tested by: 12.5% SDS-PAGE Stained with Coomassie Blue

Restrictions: For Research Use only

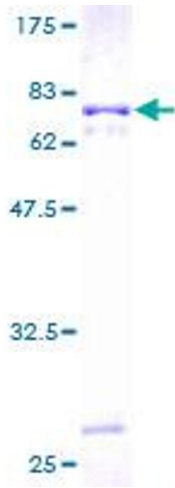
Handling

Buffer: 50 mM Tris-HCl, 10 mM reduced Glutathione, pH =8.0 in the elution buffer.

Handling Advice: Aliquot to avoid repeated freezing and thawing.

Storage: -80 °C

Storage Comment: Best use within three months from the date of receipt of this protein.



SDS-PAGE

Image 1.