



[Go to Product page](#)

Datasheet for ABIN2566110  
**anti-ALDH3B1 antibody (AA 1-431)**

1 Image

Overview

Quantity:	50 µg
Target:	ALDH3B1
Binding Specificity:	AA 1-431
Reactivity:	Human
Host:	Mouse
Clonality:	Polyclonal
Conjugate:	This ALDH3B1 antibody is un-conjugated
Application:	Western Blotting (WB)

Product Details

Purpose:	Mouse polyclonal antibody raised against a full-length human ALDH3B1 protein.
Immunogen:	ALDH3B1 (NP_001025181.1, 1 a.a. ~ 431 a.a) full-length human protein.
Sequence:	MDPLGDTLRR LREAFHAGRT RPAEFRAAQL QGLGRFLQEN KQLLHDALAQ DLHKATQLDS AFIRKEPFGL VLIIPWNYNPNLTLVPLVG ALAAGNCVVL KPSEISKNVE KILAEVLPQY VDQSCFAVVL GGPQETGQLL EHRFDYIFFT GSPRVGKIVM TAAAKHLTPV TLELGGKNPC YVDDNCDPQT VANRVAVFRY FNAGQTCVAP DYVLCSPEMQ ERLPALQST ITRFYGDDPQ SSPNLGRIN QKQFQRLRAL LGCGRVAIGG QSDSDRYIA PTVLVVDVQEM EPVMQEEIFG PILPIVNVQS LDEAIEFINR REKPLALYAF SNSSQVVKRV LTQTSSGGFC GNDGFMHMTL ASLPFGGVA SGMGRYHGKF SFDTFSSHRA CLLRSPGMEK LNALRYPPQS PRRLRMLLVA MEAQGCSTL L
Cross-Reactivity:	Human

## Product Details

Characteristics: Antibody reactive against mammalian transfected lysate.

## Target Details

Target: ALDH3B1

Alternative Name: ALDH3B1 ([ALDH3B1 Products](#))

Background: Full Gene Name: aldehyde dehydrogenase 3 family, member B1  
Synonyms: ALDH4,ALDH7,FLJ26433

Gene ID: 221

NCBI Accession: [NM\\_001030010](#)

Pathways: [Monocarboxylic Acid Catabolic Process](#)

## Application Details

Application Notes: Optimal working dilution should be determined by the investigator.

Restrictions: For Research Use only

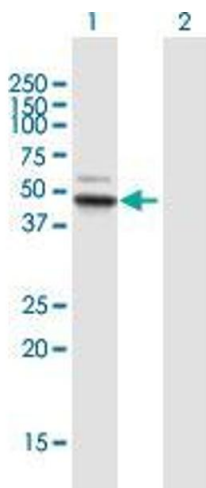
## Handling

Buffer: In 1x PBS, pH 7.4

Storage: -20 °C

Storage Comment: Store at -20°C or lower. Aliquot to avoid repeated freezing and thawing.

## Images



### Western Blotting

**Image 1.** Western Blot analysis of ALDH3B1 expression in transfected 293T cell line by ALDH3B1 MaxPab polyclonal antibody.

Lane 1: ALDH3B1 transfected lysate(47.41 KDa).

Lane 2: Non-transfected lysate.