

Datasheet for ABIN2566113  
**anti-BACE1 antibody (AA 22-501)**



[Go to Product page](#)

6 Images

Overview

|                      |   |
|----------------------|---|
| Quantity:            | 100 µg  |
| Target:              | BACE1   |
| Binding Specificity: | AA 22-501   |
| Reactivity:          | Human   |
| Host:                | Mouse   |
| Clonality:           | Monoclonal  |
| Conjugate:           | This BACE1 antibody is un-conjugated  |
| Application:         | Western Blotting (WB), ELISA, Immunohistochemistry (Paraffin-embedded Sections) (IHC (p)), Proximity Ligation Assay (PLA) |

Product Details

|            |   |
|------------|---|
| Purpose:   | Mouse monoclonal antibody raised against a full-length recombinant BACE1.   |
| Immunogen: | BACE1 (AAH65492, 22 a.a. ~ 501 a.a) full-length recombinant protein with GST tag. MW of the GST tag alone is 26 KDa.  |
| Sequence:  | TQHGIPLRLR SGLGGAPLGL RLPRETDEEP EEPGRRGSFV EMVDNLRGKS GQGYVEMTV<br>GSPPQTLNIL VDTGSSNFAV GAAPHPFLHR YYQRQLSSTY RDLRKGVVYP YTQGWEGEL<br>GTDLVSIPHG PNVTVRANIA AITESDKFFI NGSNWEGILG LAYAEIARPD DSLEPFFDSL<br>VKQTHVPNLF SLQLCGAGFP LNQSEVLASV GGSMIIGGID HSLYTGSLWY TPIRREWYVE<br>VIIVRVEING QDLKMDCKEY NYDKSIVDVG TTNLRLPKKV FEA AVKSIKA ASSTEKFPDG<br>FWLGEQLVCW QAGTTPWNIF PVISLYLMGE VTNQSFRTI LPQQYLRPVE DVATSQDDCY<br>KFAISQSSTG TVMGAVIMEG FYVVFDRARK RIGFAVSACH VHDEFRTAAV EGPFTLDME<br>DCGYNIPQTD ESTLMTIAYV MAAICALFML PLCLMVCQWR CLRCLRQQHD DFADDISLLK |

## Product Details

---

|                   |  |
|-------------------|--|
| Clone:            | 2C1  |
| Isotype:          | IgG1   |
| Cross-Reactivity: | Human, Rat                                     |
| Characteristics:  | Antibody Reactive Against Recombinant Protein. |

## Target Details

---

|                   |  |
|-------------------|--|
| Target:           | BACE1  |
| Alternative Name: | BACE1 ( <a href="#">BACE1 Products</a> )   |
| Background:       | Full Gene Name: beta-site APP-cleaving enzyme 1<br>Synonyms: ASP2,BACE,FLJ90568,HSPC104,KIAA1149 |
| Gene ID:          | 23621  |

## Application Details

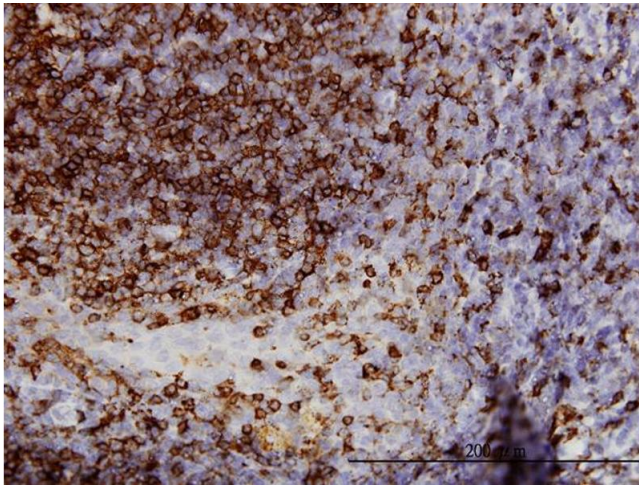
---

|                    |  |
|--------------------|--|
| Application Notes: | Optimal working dilution should be determined by the investigator. |
| Restrictions:      | For Research Use only  |

## Handling

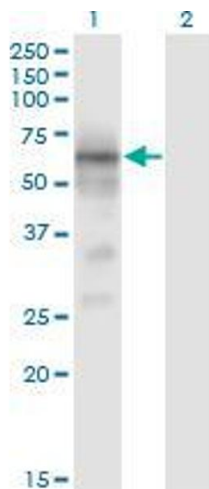
---

|                  |  |
|------------------|--|
| Buffer:          | In 1x PBS, pH 7.4  |
| Storage:         | -20 °C   |
| Storage Comment: | Store at -20°C or lower. Aliquot to avoid repeated freezing and thawing. |



### Immunostaining

**Image 1.** Immunoperoxidase of monoclonal antibody to BACE1 on formalin-fixed paraffin-embedded human tonsil. [antibody concentration 3 ug/ml]

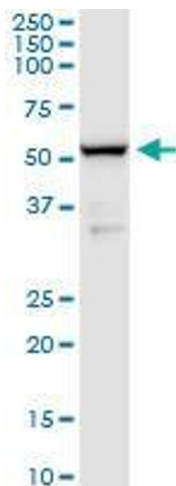


### Western Blotting

**Image 2.** Western Blot analysis of BACE1 expression in transfected 293T cell line by BACE1 monoclonal antibody (M01), clone 2C1.

Lane 1: BACE1 transfected lysate(52.9 KDa).

Lane 2: Non-transfected lysate.



### Western Blotting

**Image 3.** BACE1 monoclonal antibody (M02), clone 2C1.

Western Blot analysis of BACE1 expression in rat testis.

Please check the [product details page](#) for more images. Overall 6 images are available for ABIN2566113.