



Datasheet for ABIN2566129
anti-DIS3L2 antibody (AA 1-619)



[Go to Product page](#)

1 Image

Overview

| | |
|----------------------|---------------------------------------|
| Quantity: | 50 µg |
| Target: | DIS3L2 |
| Binding Specificity: | AA 1-619 |
| Reactivity: | Human |
| Host: | Mouse |
| Clonality: | Polyclonal |
| Conjugate: | This DIS3L2 antibody is un-conjugated |
| Application: | Western Blotting (WB) |

Product Details

| | |
|------------|---|
| Purpose: | Mouse polyclonal antibody raised against a full-length human DIS3L2 protein. |
| Immunogen: | DIS3L2 (AAH36113.2, 1 a.a. ~ 619 a.a) full-length human protein. |
| Sequence: | <p>MSHPDYRMNL RSLGTHRGVS AVAGPHDIGA SPGDKKSKNR STRGKKKSIF ETYMSKEDVS EGLKRGTLIQ GVLRLNPKKF HEAFIPSPDG DRDIFIDGVV ARNRALNGDL VVKLLPEEH WKVVKPESND KETEAAYESD IPEELCGHHL PQQSLKSYND SPDVIVEAQF DGSDSEDGHG ITQNVLDGV KKL SVCVSEK GREDGDAPVT KDETTCISQD TRALSEKSLQ RSAKVVIILE KKHSRAATGF LKLLADKNSE LFRKYALFSP SDHRVPRIYV PLKDCPQDFV ARPKDYANTL FICRIVDWKE DCNFALGQLA KSLGQAGEIE PETEGILTEY GVDFSDFSSE VLECLPQGLP WTIPPEEFSK RRDLRKDCIF TIDPSTARDL DDALSCKPLA DGNFKVGVHI ADVSYFVPEG SDLDKVAER ATSVYLVQKV VPMLPRLLCE ELCSLNPMSD KLTFSVIWL TPEGKILDEW FGRTIIRSCT KLSYEHAQSM IESPTKIPA KELPPISPEH SSEEVHQAVL NLHGIKQLR QQRFVDGALR LDQLKLAFTL DHETGLPQGC HIYEYRESNK PCCAGTPRPK QGCSVTWWNS</p> |

Product Details

ATRWGCPWTS APQEPSIKA

Cross-Reactivity: Human

Characteristics: Antibody reactive against mammalian transfected lysate.

Target Details

Target: DIS3L2

Alternative Name: DIS3L2 ([DIS3L2 Products](#))

Background: Full Gene Name: DIS3 mitotic control homolog (S. cerevisiae)-like 2
Synonyms: FAM6A,FLJ36974,MGC42174

Gene ID: 129563

Pathways: [Stem Cell Maintenance](#)

Application Details

Application Notes: Optimal working dilution should be determined by the investigator.

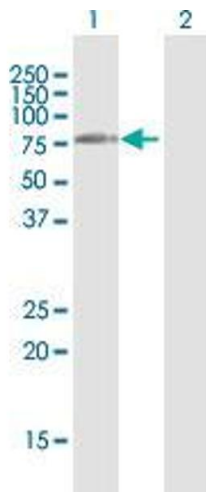
Restrictions: For Research Use only

Handling

Buffer: In 1x PBS, pH 7.4

Storage: -20 °C

Storage Comment: Store at -20°C or lower. Aliquot to avoid repeated freezing and thawing.



Western Blotting

Image 1. Western Blot analysis of DIS3L2 expression in transfected 293T cell line by DIS3L2 MaxPab polyclonal antibody.

Lane 1: MGC42174 transfected lysate(68.09 KDa).

Lane 2: Non-transfected lysate.