



Datasheet for ABIN2569025
anti-CDR2 antibody (Biotin)



[Go to Product page](#)

1 Image

Overview

Quantity:	100 µg
Target:	CDR2
Reactivity:	Human
Host:	Rabbit
Clonality:	Polyclonal
Conjugate:	This CDR2 antibody is conjugated to Biotin
Application:	ELISA, Immunohistochemistry (IHC), Western Blotting (WB), Immunohistochemistry (Paraffin-embedded Sections) (IHC (p))

Product Details

Immunogen:	Recombinant human Cerebellar degeneration-related protein 2 protein. Type of Immunogen: Recombinant protein
Isotype:	IgG
Specificity:	Human Yo / CDR2
Purification:	Caprylic acid and ammonium sulfate precipitation

Target Details

Target:	CDR2
Alternative Name:	Yo / CDR2 (CDR2 Products)
Background:	Name/Gene ID: CDR2

Target Details

Synonyms: CDR2, CDR62, Yo paraneoplastic antigen, PCD17, Yo

Gene ID: 1039

Application Details

Application Notes: Approved: ELISA, IHC, IHC-P, WB

Usage: The applications listed have been tested for the unconjugated form of this product.
Other forms have not been tested.

Comment: Target Species of Antibody: Human

Restrictions: For Research Use only

Handling

Format: Liquid

Concentration: Lot specific

Buffer: PBS, pH 7.4, 0.03 % Proclin 300, 50 % glycerol.

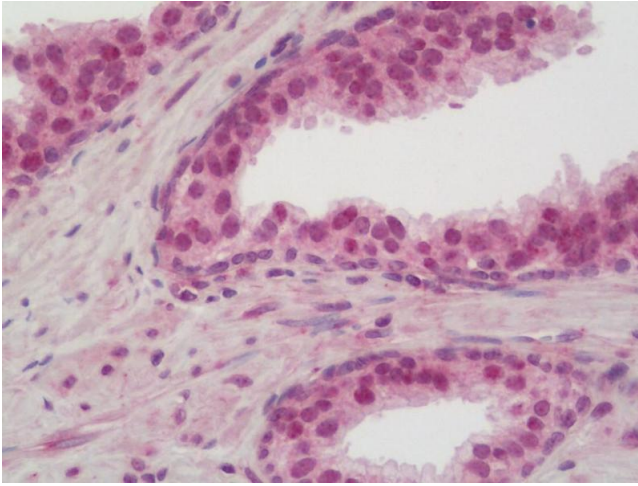
Preservative: ProClin

Precaution of Use: This product contains ProClin: a POISONOUS AND HAZARDOUS SUBSTANCE which should be handled by trained staff only.

Handling Advice: Avoid freeze-thaw cycles.

Storage: -20 °C,-80 °C

Storage Comment: Aliquot and store at -20°C or -80°C. Avoid freeze-thaw cycles.



Immunohistochemistry (Paraffin-embedded Sections)

Image 1. Human Prostate: Formalin-Fixed, Paraffin-Embedded (FFPE). This image was taken for the unconjugated form of this product. Other forms have not been tested.