



[Go to Product page](#)

Datasheet for ABIN2570775
anti-WDR48 antibody (AA 603-630)

1 Image

Overview

Quantity:	200 µL
Target:	WDR48
Binding Specificity:	AA 603-630
Reactivity:	Human
Host:	Rabbit
Clonality:	Polyclonal
Conjugate:	This WDR48 antibody is un-conjugated
Application:	Western Blotting (WB), Immunohistochemistry (IHC), Flow Cytometry (FACS), Immunohistochemistry (Paraffin-embedded Sections) (IHC (p))

Product Details

Brand:	IHC-plus™
Specificity:	This WDR48 antibody is generated from rabbits immunized with a KLH conjugated synthetic peptide between 603-630 amino acids from the C-terminal region of human WDR48.
Purification:	Protein A purified

Target Details

Target:	WDR48
Alternative Name:	WDR48 (WDR48 Products)
Background:	Name/Gene ID: WDR48

Target Details

Synonyms: WDR48, KIAA1449, USP1 associated factor 1, USP1-associated factor 1, WD repeat domain 48, WD repeat endosomal protein, p80, UAF1

Gene ID: 57599

Application Details

Application Notes: Approved: Flo (1:10 - 1:50), IHC, IHC-P (1:100), WB (1:1000)

Comment: Target Species of Antibody: Human

Restrictions: For Research Use only

Handling

Format: Liquid

Concentration: Lot specific

Buffer: PBS, 0.09 % sodium azide

Preservative: Sodium azide

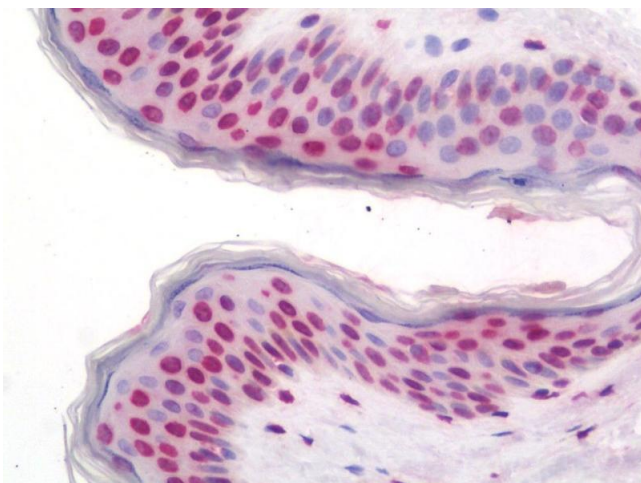
Precaution of Use: This product contains Sodium azide: a POISONOUS AND HAZARDOUS SUBSTANCE which should be handled by trained staff only.

Storage: 4 °C, -20 °C

Storage Comment: Maintain refrigerated at 2-8°C for up to 6 months. For long term storage store at -20°C.

Expiry Date: 6 months

Images



Immunohistochemistry

Image 1. Anti-WDR48 antibody IHC staining of human skin. Immunohistochemistry of formalin-fixed, paraffin-embedded tissue after heat-induced antigen retrieval. Antibody dilution 1:100.