

Datasheet for ABIN2574170  
**anti-TGFB2 antibody (FITC)**[Go to Product page](#)

## 1 Image

## Overview

Quantity:	100 µg
Target:	TGFB2
Reactivity:	Human
Host:	Rabbit
Clonality:	Polyclonal
Conjugate:	This TGFB2 antibody is conjugated to FITC
Application:	Western Blotting (WB), ELISA, Immunohistochemistry (IHC), Immunohistochemistry (Paraffin-embedded Sections) (IHC (p))

## Product Details

Immunogen:	Recombinant human Transforming growth factor beta-2 protein.  Type of Immunogen: Recombinant protein
Isotype:	IgG
Specificity:	Human TGFB2
Purification:	Caprylic acid and ammonium sulfate precipitation

## Target Details

Target:	TGFB2
Alternative Name:	TGFB2 ( <a href="#">TGFB2 Products</a> )
Background:	Name/Gene ID: TGFB2

## Target Details

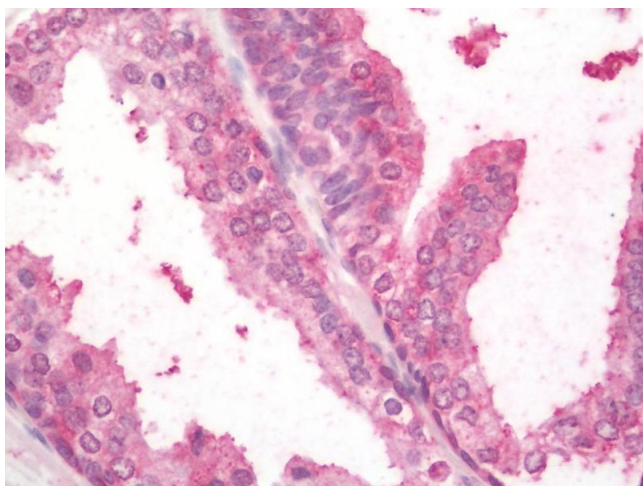
	Family: TGF beta
	Synonyms: TGFB2, BSC-1 cell growth inhibitor, Cetermin, G-TSF, LDS4, Polyergin, TGF-beta-2, TGF Beta2, TGF-beta2
Gene ID:	7042
Pathways:	<a href="#">Cell-Cell Junction Organization</a> , <a href="#">Production of Molecular Mediator of Immune Response</a> , <a href="#">Protein targeting to Nucleus</a>

## Application Details

Application Notes:	Approved: ELISA, IHC, IHC-P, WB  Usage: The applications listed have been tested for the unconjugated form of this product. Other forms have not been tested.
Comment:	Target Species of Antibody: Human
Restrictions:	For Research Use only

## Handling

Format:	Liquid
Concentration:	Lot specific
Buffer:	PBS, pH 7.4, 0.03 % Proclin 300, 50 % glycerol.
Preservative:	ProClin
Precaution of Use:	This product contains ProClin: a POISONOUS AND HAZARDOUS SUBSTANCE which should be handled by trained staff only.
Handling Advice:	Avoid freeze-thaw cycles.
Storage:	-20 °C,-80 °C
Storage Comment:	Aliquot and store at -20°C or -80°C. Avoid freeze-thaw cycles.



#### Immunohistochemistry (Paraffin-embedded Sections)

**Image 1.** Human Prostate: Formalin-Fixed, Paraffin-Embedded (FFPE). This image was taken for the unconjugated form of this product. Other forms have not been tested.