

Datasheet for ABIN2575648
anti-TTC15 antibody (AA 579-608)[Go to Product page](#)

1 Image

Overview

Quantity:	200 µL
Target:	TTC15
Binding Specificity:	AA 579-608
Reactivity:	Human
Host:	Rabbit
Clonality:	Polyclonal
Conjugate:	This TTC15 antibody is un-conjugated
Application:	Western Blotting (WB), Immunohistochemistry (IHC), ELISA, Immunohistochemistry (Paraffin-embedded Sections) (IHC (p))

Product Details

Isotype:	IgG
Specificity:	This TTC15 antibody is generated from rabbits immunized with a KLH conjugated synthetic peptide between 579-608 amino acids from the C-terminal region of human TTC15.
Purification:	Affinity purified

Target Details

Target:	TTC15
Alternative Name:	TRAPPC12 / TTC15 (TTC15 Products)
Background:	Name/Gene ID: TRAPPC12

Target Details

Synonyms: TRAPPC12, CGI-87, TPR repeat protein 15, TTC-15, TTC15

Gene ID: 51112

Application Details

Application Notes: Approved: ELISA (1:1000), IHC, IHC-P (5 µg/mL), WB (1:100 - 1:500)

Comment: Target Species of Antibody: Human

Restrictions: For Research Use only

Handling

Format: Liquid

Concentration: Lot specific

Buffer: PBS, pH 7.2, 0.09 % sodium azide.

Preservative: Sodium azide

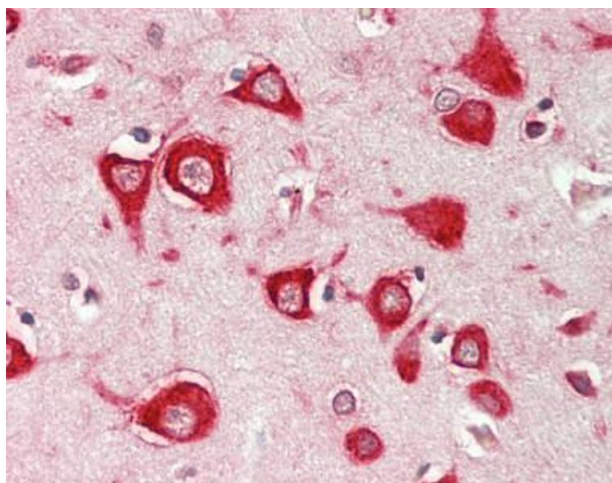
Precaution of Use: This product contains Sodium azide: a POISONOUS AND HAZARDOUS SUBSTANCE which should be handled by trained staff only.

Handling Advice: Aliquot to avoid repeated freezing and thawing.

Storage: 4 °C, -20 °C

Storage Comment: May be stored at 4°C for short-term only. Aliquot to avoid freeze-thaw cycles. Store at -20°C. Aliquots are stable for 1 year.

Images



Immunohistochemistry (Paraffin-embedded Sections)

Image 1. Human Brain, Cortex: Formalin-Fixed, Paraffin-Embedded (FFPE). This image was taken for the unconjugated form of this product. Other forms have not been tested.