



[Go to Product page](#)

Datasheet for ABIN2576715
anti-PPY antibody (AA 31-97)

1 Image

Overview

Quantity:	100 µL
Target:	PPY
Binding Specificity:	AA 31-97
Reactivity:	Human, Mouse
Host:	Rabbit
Clonality:	Polyclonal
Conjugate:	This PPY antibody is un-conjugated
Application:	Western Blotting (WB), Immunohistochemistry (IHC), Immunohistochemistry (Paraffin-embedded Sections) (IHC (p))

Product Details

Immunogen:	Recombinant PP (Pro31-Ala97) expressed in E. coli. Type of Immunogen: Recombinant protein
Isotype:	IgG
Specificity:	The antibody is a rabbit polyclonal antibody raised against PP. It has been selected for its ability to recognize PP in immunohistochemical staining and western blotting.
Purification:	Antigen-specific affinity chromatography followed by Protein A affinity chromatography

Target Details

Target:	PPY
---------	-----

Target Details

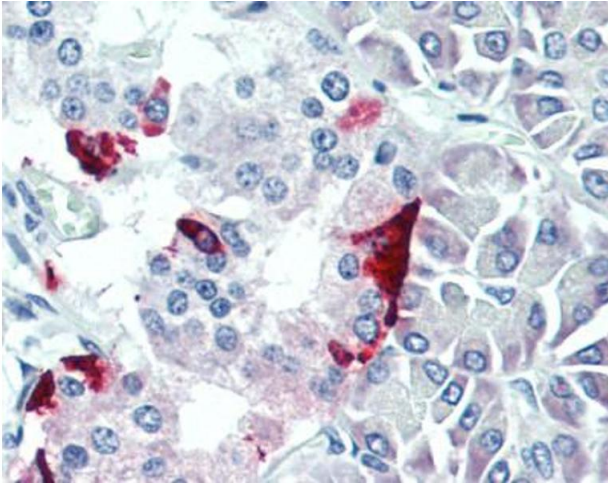
Alternative Name:	PPY / Pancreatic Polypeptide (PPY Products)
Background:	Name/Gene ID: PPY Family: Pancreatic hormone Synonyms: PPY, Obinepitide, Pancreatic polypeptide Y, Pancreatic prohormone, PP, Pancreatic polypeptide, Pancreatic hormone
Gene ID:	5539
Pathways:	Feeding Behaviour

Application Details

Application Notes:	Approved: IHC, IHC-P (20 µg/mL), WB (0.5 - 2 µg/mL) Usage: WB 0.5-2 µg/mL, IHC-P 20 µg/mL
Comment:	Target Species of Antibody: Mouse
Restrictions:	For Research Use only

Handling

Format:	Liquid
Concentration:	Lot specific
Buffer:	PBS, pH 7.4, 0.02 % sodium azide, 50 % glycerol.
Preservative:	Sodium azide
Precaution of Use:	This product contains Sodium azide: a POISONOUS AND HAZARDOUS SUBSTANCE which should be handled by trained staff only.
Storage:	4 °C,-20 °C
Storage Comment:	Store at 4°C for frequent use. Aliquot and store at -20°C for up to 1 year. Avoid freeze-thaw cycles.
Expiry Date:	12 months



Immunohistochemistry (Paraffin-embedded Sections)

Image 1. Human Pancreas: Formalin-Fixed, Paraffin-Embedded (FFPE)