

Datasheet for ABIN2577171  
**anti-PROS1 antibody (AA 481-667) (FITC)**[Go to Product page](#)

## 1 Image

## Overview

|                      |   |
|----------------------|---|
| Quantity:            | 100 µL                                    |
| Target:              | PROS1 (PROS)                              |
| Binding Specificity: | AA 481-667                                |
| Reactivity:          | Human                                     |
| Host:                | Rabbit                                    |
| Clonality:           | Polyclonal                                |
| Conjugate:           | This PROS1 antibody is conjugated to FITC |
| Application:         | Western Blotting (WB)                     |

## Product Details

|               |  |
|---------------|--|
| Immunogen:    | Recombinant PROS (Lys481-Pro667) expressed in E. coli. |
|               | Type of Immunogen: Recombinant protein                 |
| Isotype:      | IgG  |
| Specificity:  | Human PROS1 / Protein S                                |
| Purification: | Affinity purified                                      |

## Target Details

|                   |   |
|-------------------|---|
| Target:           | PROS1 (PROS)  |
| Alternative Name: | PROS1 / Protein S ( <a href="#">PROS Products</a> ) |

## Target Details

Background: Name/Gene ID: PROS1

Synonyms: PROS1, Protein S (alpha), Protein S alpha, Protein Sa, PS22, PS21, Vitamin K-dependent protein S, THPH5, THPH6, PROS, PS24, Protein S, PS23, PS25

Gene ID: 5627

## Application Details

Application Notes: Approved: WB

Usage: The applications listed have been tested for the unconjugated form of this product. Other forms have not been tested.

Comment: Target Species of Antibody: Human

Restrictions: For Research Use only

## Handling

Format: Liquid

Concentration: Lot specific

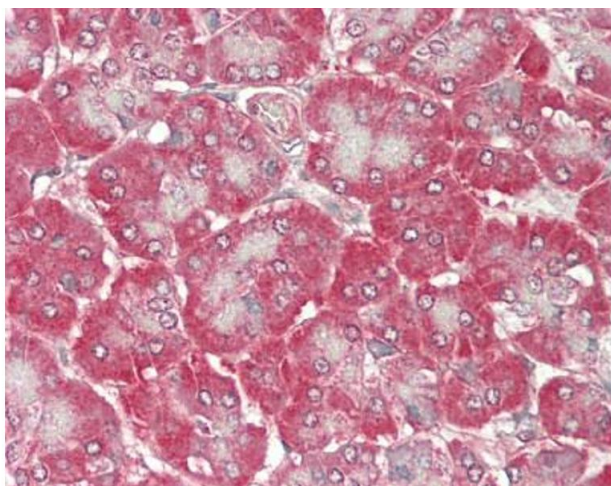
Buffer: PBS, pH 7.4, 0.02 % sodium azide, 50 % glycerol.

Preservative: Sodium azide

Precaution of Use: This product contains Sodium azide: a POISONOUS AND HAZARDOUS SUBSTANCE which should be handled by trained staff only.

Storage: 4 °C,-20 °C,-80 °C

Storage Comment: Store frozen product at or below -20°C. Thawed product may be stored for 2-4 weeks at 4°C. For optimal storage, aliquot to smaller portions and store at -20°C to -70°C. Avoid freeze-thaw cycles.



#### Immunohistochemistry (Paraffin-embedded Sections)

**Image 1.** Human Pancreas: Formalin-Fixed, Paraffin-Embedded (FFPE). This image was taken for the unconjugated form of this product. Other forms have not been tested.