



[Go to Product page](#)

Datasheet for ABIN2578413
anti-Red Blood Cell antibody

1 Image

Overview

Quantity:	2 mg
Target:	Red Blood Cell (RBC)
Reactivity:	Human
Host:	Rabbit
Clonality:	Polyclonal
Conjugate:	This Red Blood Cell antibody is un-conjugated
Application:	Cytotoxicity Test (CyTox), Haemagglutination (H), Immunohistochemistry (Paraffin-embedded Sections) (IHC (p)), Immunohistochemistry (IHC)

Product Details

Brand:	IHC-plus™
Immunogen:	Type of Immunogen: Native protein
Isotype:	IgG
Specificity:	Directed against human red blood cells.
Purification:	Ion exchange chromatography
Sterility:	Sterile

Target Details

Target:	Red Blood Cell (RBC)
---------	----------------------

Target Details

Alternative Name: RBC / Red Blood Cells ([RBC Products](#))

Application Details

Application Notes: Approved: Ctox, Hagg, IHC, IHC-P (2.5 µg/mL)

Comment: Target Species of Antibody: Human

Restrictions: For Research Use only

Handling

Format: Liquid

Concentration: Lot specific

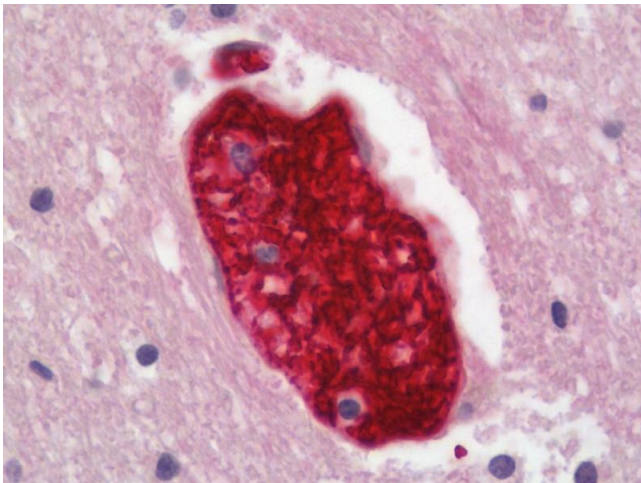
Buffer: PBS, sterile.

Handling Advice: Aliquot to avoid freeze/thaw cycles.

Storage: -20 °C

Storage Comment: Store at -20°C. Aliquot to avoid freeze-thaw cycles. Store undiluted.

Images



Immunohistochemistry

Image 1. Human Brain, Cortex: Formalin-Fixed, Paraffin-Embedded (FFPE)