

Datasheet for ABIN2579176
anti-RNASE2 antibody (Biotin)[Go to Product page](#)

1 Image

Overview

Quantity:	100 µg
Target:	RNASE2
Reactivity:	Human
Host:	Rabbit
Clonality:	Polyclonal
Conjugate:	This RNASE2 antibody is conjugated to Biotin
Application:	Western Blotting (WB), ELISA, Immunohistochemistry (IHC), Immunohistochemistry (Paraffin-embedded Sections) (IHC (p))

Product Details

Immunogen:	Recombinant human Non-secretory ribonuclease protein. Type of Immunogen: Recombinant protein
Isotype:	IgG
Specificity:	Human RNASE2 / EDN
Purification:	Caprylic acid and ammonium sulfate precipitation

Target Details

Target:	RNASE2
Alternative Name:	RNASE2 / EDN (RNASE2 Products)
Background:	Name/Gene ID: RNASE2

Target Details

Synonyms: RNASE2, EDN, Eosinophil-derived neurotoxin, Ribonuclease US, RNase 2, RNase Upl-2, RNS2, Non-secretory ribonuclease, Ribonuclease 2

Gene ID: 6036

Application Details

Application Notes: Approved: ELISA, IHC, IHC-P, WB

Usage: The applications listed have been tested for the unconjugated form of this product.
Other forms have not been tested.

Comment: Target Species of Antibody: Human

Restrictions: For Research Use only

Handling

Format: Liquid

Concentration: Lot specific

Buffer: PBS, pH 7.4, 0.03 % Proclin 300, 50 % glycerol.

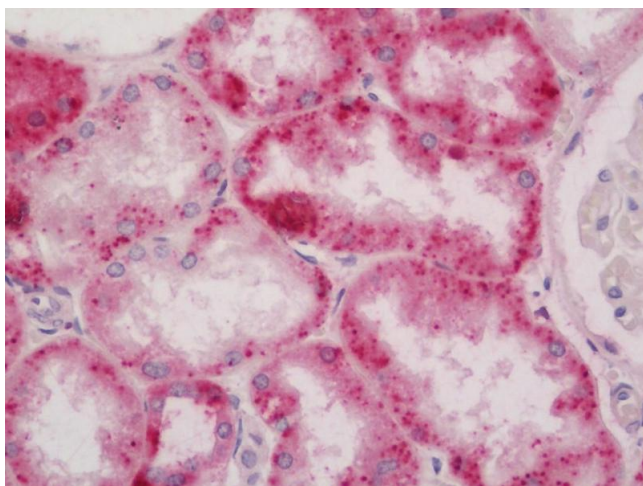
Preservative: ProClin

Precaution of Use: This product contains ProClin: a POISONOUS AND HAZARDOUS SUBSTANCE which should be handled by trained staff only.

Handling Advice: Avoid freeze-thaw cycles.

Storage: -20 °C, -80 °C

Storage Comment: Aliquot and store at -20°C or -80°C. Avoid freeze-thaw cycles.



Immunohistochemistry (Paraffin-embedded Sections)

Image 1. Human Kidney: Formalin-Fixed, Paraffin-Embedded (FFPE). This image was taken for the unconjugated form of this product. Other forms have not been tested.