



[Go to Product page](#)

Datasheet for ABIN2579476
anti-RPL14 antibody (Biotin)

1 Image

Overview

Quantity:	100 µg
Target:	RPL14
Reactivity:	Human
Host:	Rabbit
Clonality:	Polyclonal
Conjugate:	This RPL14 antibody is conjugated to Biotin
Application:	Western Blotting (WB), ELISA, Immunohistochemistry (IHC), Immunohistochemistry (Paraffin-embedded Sections) (IHC (p))

Product Details

Immunogen:	Recombinant human 60S ribosomal protein L14 protein. Type of Immunogen: Recombinant protein
Isotype:	IgG
Specificity:	Human RPL14
Purification:	Caprylic acid and ammonium sulfate precipitation

Target Details

Target:	RPL14
Alternative Name:	RPL14 (RPL14 Products)
Background:	Name/Gene ID: RPL14

Target Details

Synonyms: RPL14, 60S ribosomal protein L14, CAG-ISL 7, HRL14, MMRPL32, Ribosomal protein L14, RL14, CAG-ISL-7, CTG-B33, L14

Gene ID: 9045

Application Details

Application Notes: Approved: ELISA, IHC, IHC-P, WB

Usage: The applications listed have been tested for the unconjugated form of this product. Other forms have not been tested.

Comment: Target Species of Antibody: Human

Restrictions: For Research Use only

Handling

Format: Liquid

Concentration: Lot specific

Buffer: PBS, pH 7.4, 0.03 % Proclin 300, 50 % glycerol.

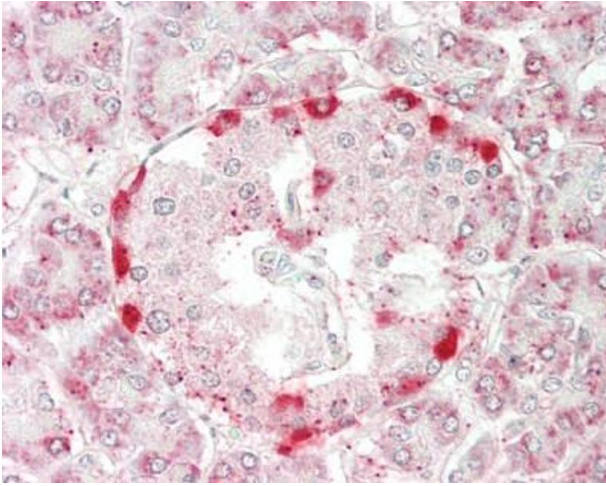
Preservative: ProClin

Precaution of Use: This product contains ProClin: a POISONOUS AND HAZARDOUS SUBSTANCE which should be handled by trained staff only.

Handling Advice: Avoid freeze-thaw cycles.

Storage: -20 °C, -80 °C

Storage Comment: Aliquot and store at -20°C or -80°C. Avoid freeze-thaw cycles.



Immunohistochemistry (Paraffin-embedded Sections)

Image 1. Human Pancreas: Formalin-Fixed, Paraffin-Embedded (FFPE). This image was taken for the unconjugated form of this product. Other forms have not been tested.