



[Go to Product page](#)

Datasheet for ABIN2579857  
**anti-S100A12 antibody**

1 Image

Overview

Quantity:	50 µL
Target:	S100A12
Reactivity:	Human
Host:	Mouse
Clonality:	Monoclonal
Conjugate:	This S100A12 antibody is un-conjugated
Application:	Immunohistochemistry (IHC), Western Blotting (WB), Immunohistochemistry (Paraffin-embedded Sections) (IHC (p))

Product Details

Brand:	IHC-plus™
Immunogen:	Full length human recombinant protein of human S100A12 (NP_005612) produced in HEK293T cell.  Type of Immunogen: Recombinant protein
Clone:	1D1
Isotype:	IgG1
Specificity:	Human S100A12 / CGRP
Purification:	Immunoaffinity purified

## Target Details

---

Target:	S100A12
Alternative Name:	S100A12 / CGRP ( <a href="#">S100A12 Products</a> )
Background:	Name/Gene ID: S100A12  Synonyms: S100A12, Calgranulin-C, CGRP, CAAF1, ENRAGE, MRP-6, MRP6, Neutrophil S100 protein, Protein S100-A12, CAGC, Calgranulin C, EN-RAGE, p6
Gene ID:	6283
NCBI Accession:	<a href="#">NP_005612</a>
Pathways:	<a href="#">Toll-Like Receptors Cascades</a> , <a href="#">S100 Proteins</a>

## Application Details

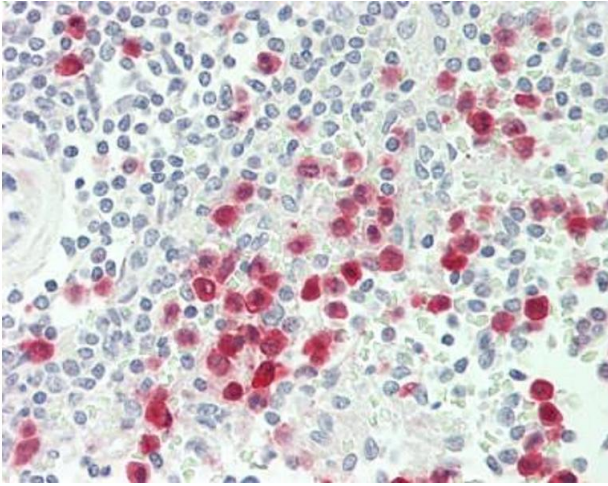
---

Application Notes:	Approved: IHC, IHC-P (10 µg/mL), WB (1:500)
Comment:	Target Species of Antibody: Human
Restrictions:	For Research Use only

## Handling

---

Format:	Liquid
Concentration:	Lot specific
Buffer:	PBS, pH 7.3, 1 % BSA, 50 % glycerol, 0.02 % sodium azide
Preservative:	Sodium azide
Precaution of Use:	This product contains Sodium azide: a POISONOUS AND HAZARDOUS SUBSTANCE which should be handled by trained staff only.
Handling Advice:	Minimize freezing and thawing.
Storage:	-20 °C
Storage Comment:	Store at -20°C. Avoid freeze-thaw cycles.



### Immunohistochemistry (Paraffin-embedded Sections)

**Image 1.** Human Spleen: Formalin-Fixed, Paraffin-Embedded (FFPE)