



Datasheet for ABIN2580266
anti-SCP2 antibody (Biotin)



[Go to Product page](#)

1 Image

Overview

Quantity:	100 µg
Target:	SCP2
Reactivity:	Human
Host:	Rabbit
Clonality:	Polyclonal
Conjugate:	This SCP2 antibody is conjugated to Biotin
Application:	Western Blotting (WB), ELISA, Immunohistochemistry (IHC), Immunohistochemistry (Paraffin-embedded Sections) (IHC (p))

Product Details

Immunogen:	Recombinant human Non-specific lipid-transfer protein. Type of Immunogen: Recombinant protein
Isotype:	IgG
Specificity:	Human SCP2 / SCPX
Purification:	Caprylic acid and ammonium sulfate precipitation

Target Details

Target:	SCP2
Alternative Name:	SCP2 / SCPX (SCP2 Products)
Background:	Name/Gene ID: SCP2

Target Details

Synonyms: SCP2, NLTP, NSL-TP, SCP-CHI, SCP-X, Sterol carrier protein 2, Sterol carrier protein X, SCP-2, SCPX

Gene ID: 6342

Pathways: [C21-Steroid Hormone Metabolic Process](#), [Monocarboxylic Acid Catabolic Process](#)

Application Details

Application Notes: Approved: ELISA, IHC, IHC-P, WB

Usage: The applications listed have been tested for the unconjugated form of this product. Other forms have not been tested.

Comment: Target Species of Antibody: Human

Restrictions: For Research Use only

Handling

Format: Liquid

Concentration: Lot specific

Buffer: PBS, pH 7.4, 0.03 % Proclin 300, 50 % glycerol.

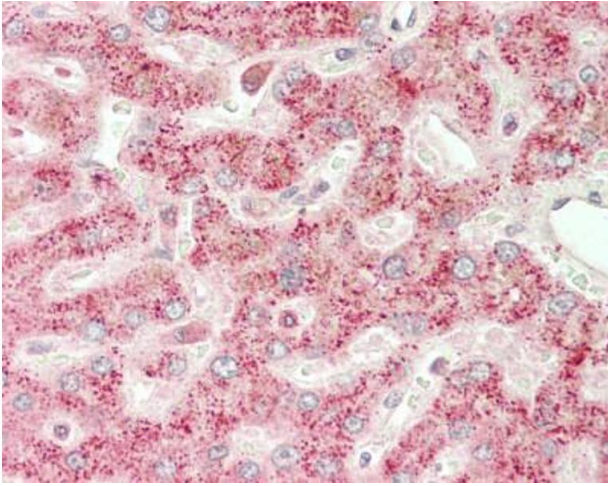
Preservative: ProClin

Precaution of Use: This product contains ProClin: a POISONOUS AND HAZARDOUS SUBSTANCE which should be handled by trained staff only.

Handling Advice: Avoid freeze-thaw cycles.

Storage: -20 °C, -80 °C

Storage Comment: Aliquot and store at -20°C or -80°C. Avoid freeze-thaw cycles.



Immunohistochemistry (Paraffin-embedded Sections)

Image 1. Human Liver: Formalin-Fixed, Paraffin-Embedded (FFPE). This image was taken for the unconjugated form of this product. Other forms have not been tested.