

Datasheet for ABIN2580917
anti-CSH1 antibody (HRP)[Go to Product page](#)

1 Image

Overview

Quantity:	100 µg
Target:	CSH1
Reactivity:	Human
Host:	Rabbit
Clonality:	Polyclonal
Conjugate:	This CSH1 antibody is conjugated to HRP
Application:	Western Blotting (WB), ELISA, Immunohistochemistry (IHC), Immunohistochemistry (Paraffin-embedded Sections) (IHC (p))

Product Details

Immunogen:	Recombinant human Chorionic somatomammotropin hormone protein. Type of Immunogen: Recombinant protein
Isotype:	IgG
Specificity:	Human CSH1 / Placental Lactogen
Purification:	Caprylic acid and ammonium sulfate precipitation

Target Details

Target:	CSH1
Alternative Name:	Placental Lactogen (CSH1 Products)
Pathways:	Response to Growth Hormone Stimulus

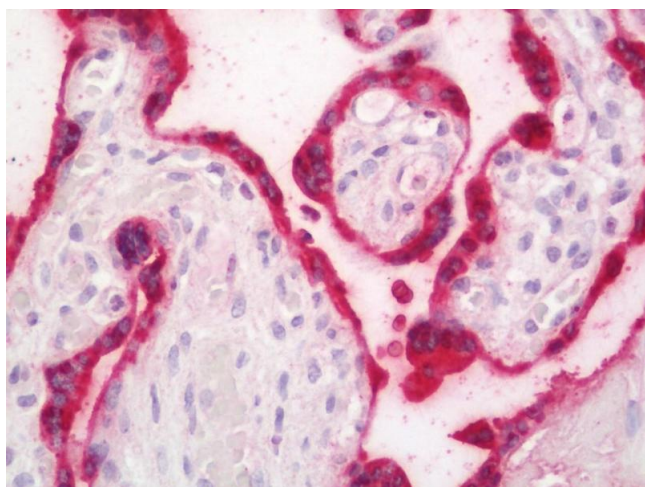
Application Details

Application Notes:	Approved: ELISA, IHC, IHC-P, WB
	Usage: The applications listed have been tested for the unconjugated form of this product. Other forms have not been tested.
Comment:	Target Species of Antibody: Human
Restrictions:	For Research Use only

Handling

Format:	Liquid
Concentration:	Lot specific
Buffer:	PBS, pH 7.4, 0.03 % Proclin 300, 50 % glycerol.
Preservative:	ProClin
Precaution of Use:	This product contains ProClin: a POISONOUS AND HAZARDOUS SUBSTANCE which should be handled by trained staff only.
Handling Advice:	Avoid freeze-thaw cycles.
Storage:	-20 °C,-80 °C
Storage Comment:	Aliquot and store at -20°C or -80°C. Avoid freeze-thaw cycles.

Images



Immunohistochemistry (Paraffin-embedded Sections)

Image 1. Human Placenta: Formalin-Fixed, Paraffin-Embedded (FFPE). This image was taken for the unconjugated form of this product. Other forms have not been tested.