



[Go to Product page](#)

Datasheet for ABIN2580918  
**anti-CSH1 antibody (FITC)**

1 Image

Overview

Quantity:	100 µg
Target:	CSH1
Reactivity:	Human
Host:	Rabbit
Clonality:	Polyclonal
Conjugate:	This CSH1 antibody is conjugated to FITC
Application:	Western Blotting (WB), ELISA, Immunohistochemistry (IHC), Immunohistochemistry (Paraffin-embedded Sections) (IHC (p))

Product Details

Immunogen:	Recombinant human Chorionic somatomammotropin hormone protein. Type of Immunogen: Recombinant protein
Isotype:	IgG
Specificity:	Human CSH1 / Placental Lactogen
Purification:	Caprylic acid and ammonium sulfate precipitation

Target Details

Target:	CSH1
Alternative Name:	Placental Lactogen ( <a href="#">CSH1 Products</a> )
Pathways:	<a href="#">Response to Growth Hormone Stimulus</a>

## Application Details

Application Notes: Approved: ELISA, IHC, IHC-P, WB

Usage: The applications listed have been tested for the unconjugated form of this product.  
Other forms have not been tested.

Comment: Target Species of Antibody: Human

Restrictions: For Research Use only

## Handling

Format: Liquid

Concentration: Lot specific

Buffer: PBS, pH 7.4, 0.03 % Proclin 300, 50 % glycerol.

Preservative: ProClin

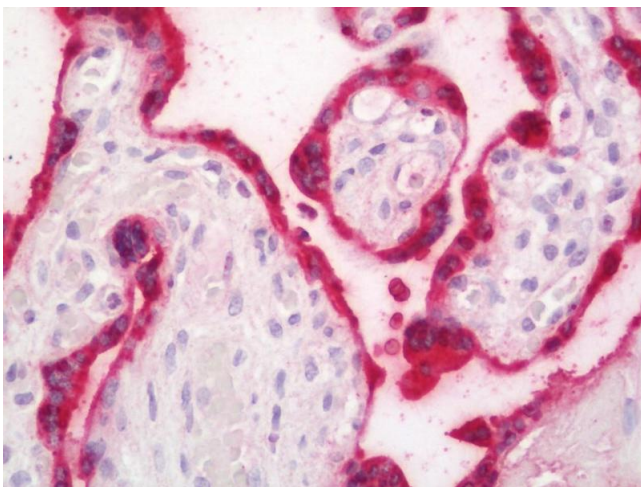
Precaution of Use: This product contains ProClin: a POISONOUS AND HAZARDOUS SUBSTANCE which should be handled by trained staff only.

Handling Advice: Avoid freeze-thaw cycles.

Storage: -20 °C, -80 °C

Storage Comment: Aliquot and store at -20°C or -80°C. Avoid freeze-thaw cycles.

## Images



### Immunohistochemistry (Paraffin-embedded Sections)

**Image 1.** Human Placenta: Formalin-Fixed, Paraffin-Embedded (FFPE). This image was taken for the unconjugated form of this product. Other forms have not been tested.