

Datasheet for ABIN2581104
anti-PLTP antibody (HRP)[Go to Product page](#)

1 Image

Overview

Quantity:	100 µg
Target:	PLTP
Reactivity:	Human
Host:	Rabbit
Clonality:	Polyclonal
Conjugate:	This PLTP antibody is conjugated to HRP
Application:	Immunohistochemistry (IHC), ELISA, Immunohistochemistry (Paraffin-embedded Sections) (IHC (p))

Product Details

Immunogen:	Recombinant human Phospholipid transfer protein. Type of Immunogen: Recombinant protein
Isotype:	IgG
Specificity:	Human PLTP
Purification:	Caprylic acid and ammonium sulfate precipitation

Target Details

Target:	PLTP
Alternative Name:	PLTP (PLTP Products)
Background:	Name/Gene ID: PLTP

Target Details

Synonyms: PLTP, BPI fold containing family E, BPIFE, Phospholipid transfer protein, Lipid transfer protein II, HDLCQ9

Gene ID: 5360

Pathways: [Lipid Metabolism](#)

Application Details

Application Notes: Approved: ELISA, IHC, IHC-P

Usage: The applications listed have been tested for the unconjugated form of this product.
Other forms have not been tested.

Comment: Target Species of Antibody: Human

Restrictions: For Research Use only

Handling

Format: Liquid

Concentration: Lot specific

Buffer: PBS, pH 7.4, 0.03 % Proclin 300, 50 % glycerol.

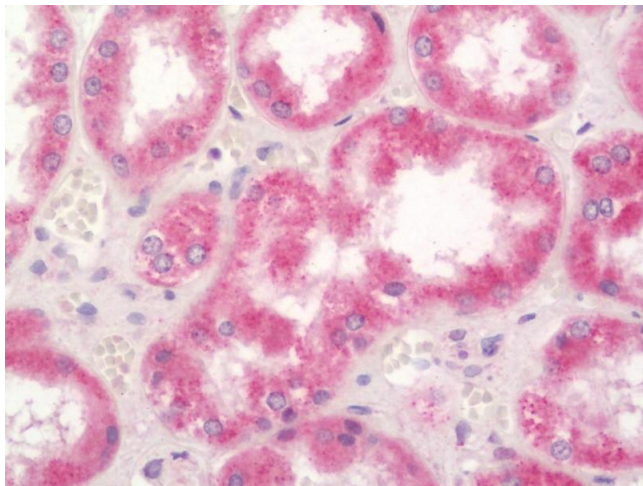
Preservative: ProClin

Precaution of Use: This product contains ProClin: a POISONOUS AND HAZARDOUS SUBSTANCE which should be handled by trained staff only.

Handling Advice: Avoid freeze-thaw cycles.

Storage: -20 °C, -80 °C

Storage Comment: Aliquot and store at -20°C or -80°C. Avoid freeze-thaw cycles.



Immunohistochemistry (Paraffin-embedded Sections)

Image 1. Human Kidney: Formalin-Fixed, Paraffin-Embedded (FFPE). This image was taken for the unconjugated form of this product. Other forms have not been tested.