

Datasheet for ABIN2581510

anti-Pyruvate Kinase, Muscle (PKM) antibody (HRP)[Go to Product page](#)**1** Image

Overview

Quantity:	100 µg
Target:	Pyruvate Kinase, Muscle (PKM)
Reactivity:	Human
Host:	Rabbit
Clonality:	Polyclonal
Conjugate:	HRP
Application:	Western Blotting (WB), Immunohistochemistry (IHC), ELISA, Immunohistochemistry (Paraffin-embedded Sections) (IHC (p))

Product Details

Immunogen:	Recombinant human Pyruvate kinase PKM protein. Type of Immunogen: Recombinant protein
Isotype:	IgG
Specificity:	Human PKM / Pyruvate Kinase
Purification:	Caprylic acid and ammonium sulfate precipitation

Target Details

Target:	Pyruvate Kinase, Muscle (PKM)
Alternative Name:	PKM / Pyruvate Kinase, Muscle (PKM Products)
Background:	Name/Gene ID: PKM

Target Details

Synonyms: PKM, p58, PK3, PKM2, Pyruvate Kinase, Pyruvate kinase 2/3, Pyruvate kinase, m1, Pyruvate kinase, muscle, TCB, Tumor M2-PK, OIP-3, OIP3, Opa-interacting protein 3, CTHBP, PK, muscle type, PK2, Pyruvate kinase isozymes M1/M2, Pyruvate kinase muscle isozyme, THBP1

Gene ID: 5315

Pathways: [Warburg Effect](#)

Application Details

Application Notes: Approved: ELISA, IHC, IHC-P, WB

Usage: The applications listed have been tested for the unconjugated form of this product.
Other forms have not been tested.

Comment: Target Species of Antibody: Human

Restrictions: For Research Use only

Handling

Format: Liquid

Concentration: Lot specific

Buffer: PBS, pH 7.4, 0.03 % Proclin 300, 50 % glycerol.

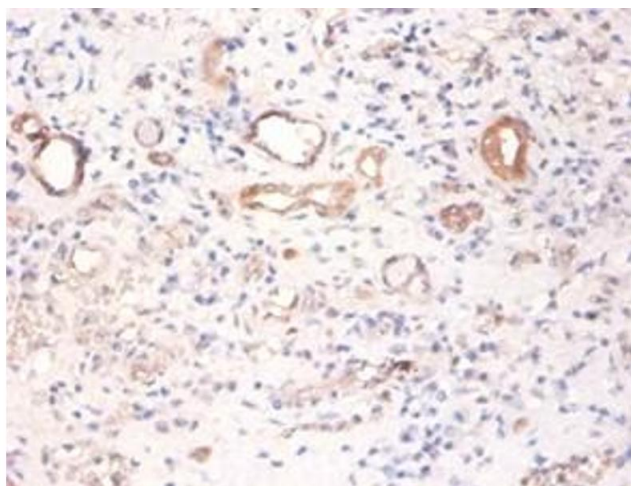
Preservative: ProClin

Precaution of Use: This product contains ProClin: a POISONOUS AND HAZARDOUS SUBSTANCE which should be handled by trained staff only.

Handling Advice: Avoid freeze-thaw cycles.

Storage: -20 °C,-80 °C

Storage Comment: Aliquot and store at -20°C or -80°C. Avoid freeze-thaw cycles.



Immunohistochemistry

Image 1. Immunohistochemistry of paraffin-embedded human kidney using PKM / Pyruvate Kinase antibody at dilution of 1:100. This image was taken for the unconjugated form of this product. Other forms have not been tested.