



[Go to Product page](#)

Datasheet for ABIN2581513

anti-Pyruvate Kinase, Muscle (PKM) (AA 383-417) antibody

1 Image

Overview

Quantity:	200 µL
Target:	Pyruvate Kinase, Muscle (PKM)
Binding Specificity:	AA 383-417
Reactivity:	Human, Mouse
Host:	Rabbit
Clonality:	Polyclonal
Conjugate:	Un-conjugated
Application:	Western Blotting (WB), Immunohistochemistry (IHC), Immunohistochemistry (Paraffin-embedded Sections) (IHC (p))

Product Details

Brand:	IHC-plus™
Specificity:	This PKM1 antibody is generated from rabbits immunized with a KLH conjugated synthetic peptide between 383-417 amino acids from the C-terminal region of human PKM1.
Purification:	Protein A purified

Target Details

Target:	Pyruvate Kinase, Muscle (PKM)
Alternative Name:	PKM / Pyruvate Kinase, Muscle (PKM Products)
Background:	Name/Gene ID: PKM

Target Details

Synonyms: PKM, p58, PK3, PKM2, Pyruvate Kinase, Pyruvate kinase 2/3, Pyruvate kinase, m1, Pyruvate kinase, muscle, TCB, Tumor M2-PK, OIP-3, OIP3, Opa-interacting protein 3, CTHBP, PK, muscle type, PK2, Pyruvate kinase isozymes M1/M2, Pyruvate kinase muscle isozyme, THBP1

Gene ID: 5315

Pathways: [Warburg Effect](#)

Application Details

Application Notes: Approved: IHC, IHC-P (1:100), WB (1:1000)

Comment: Target Species of Antibody: Human

Restrictions: For Research Use only

Handling

Format: Liquid

Concentration: Lot specific

Buffer: PBS, 0.09 % sodium azide

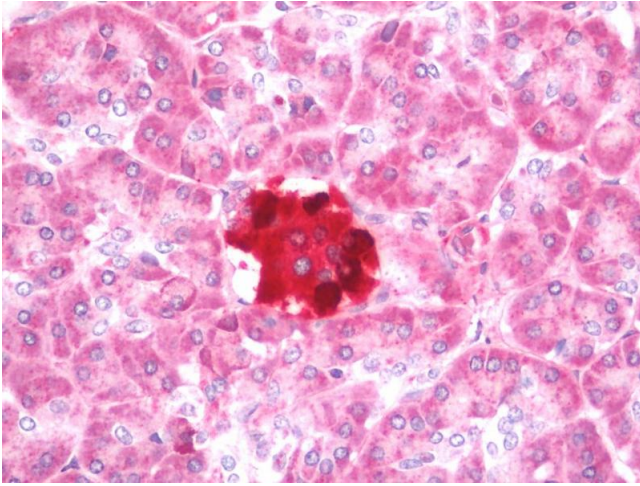
Preservative: Sodium azide

Precaution of Use: This product contains Sodium azide: a POISONOUS AND HAZARDOUS SUBSTANCE which should be handled by trained staff only.

Storage: 4 °C, -20 °C

Storage Comment: Maintain refrigerated at 2-8°C for up to 6 months. For long term storage store at -20°C.

Expiry Date: 6 months



Immunohistochemistry

Image 1. Human Pancreas: Formalin-Fixed, Paraffin-Embedded (FFPE)