



[Go to Product page](#)

Datasheet for ABIN2582958

anti-PDE4B antibody

1 Image

Overview

Quantity:	100 µL
Target:	PDE4B
Reactivity:	Human, Mouse
Host:	Mouse
Clonality:	Monoclonal
Conjugate:	This PDE4B antibody is un-conjugated
Application:	Western Blotting (WB), Immunohistochemistry (IHC), Flow Cytometry (FACS), Immunofluorescence (IF), Immunohistochemistry (Paraffin-embedded Sections) (IHC (p))

Product Details

Brand:	IHC-plus™
Immunogen:	Full length human recombinant protein of human PDE4B(NP_002591) produced in HEK293T cell. Type of Immunogen: Recombinant protein
Clone:	1D12
Isotype:	IgG1
Specificity:	Human PDE4B
Purification:	Protein A/G purified

Target Details

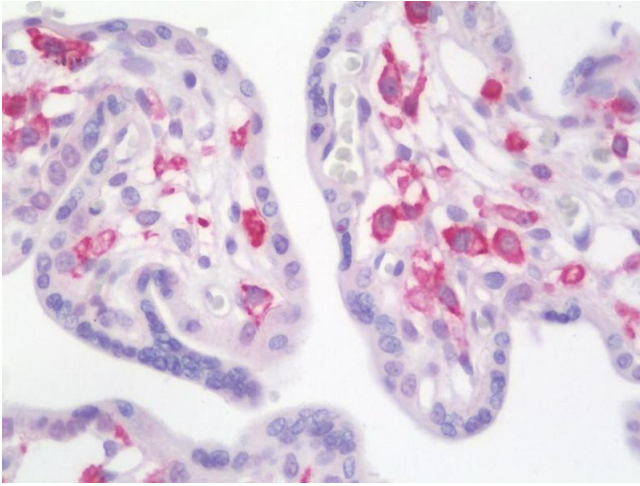
Target:	PDE4B
Alternative Name:	PDE4B (PDE4B Products)
Background:	Name/Gene ID: PDE4B Subfamily: PDE - cAMP-specific Family: Phosphodiesterase Synonyms: PDE4B, Pde-ivb, PDE32, PDE4B5, PDEIVB, Phosphodiesterase 4b, DPDE4, PDE4B3
Gene ID:	5142
NCBI Accession:	NP_002591
Pathways:	Cellular Response to Molecule of Bacterial Origin , cAMP Metabolic Process , Myometrial Relaxation and Contraction

Application Details

Application Notes:	Approved: Flo (1:100), IF (1:100), IHC, IHC-P (10 µg/mL), WB (1:500 - 1:2000)
Comment:	Target Species of Antibody: Human
Restrictions:	For Research Use only

Handling

Format:	Liquid
Concentration:	Lot specific
Buffer:	PBS, pH 7.3, 1 % BSA, 50 % glycerol, 0.02 % sodium azide
Preservative:	Sodium azide
Precaution of Use:	This product contains Sodium azide: a POISONOUS AND HAZARDOUS SUBSTANCE which should be handled by trained staff only.
Handling Advice:	Minimize freezing and thawing.
Storage:	-20 °C
Storage Comment:	Store at -20°C. Avoid freeze-thaw cycles.



Immunohistochemistry

Image 1. Anti-PDE4B antibody IHC staining of human placenta. Immunohistochemistry of formalin-fixed, paraffin-embedded tissue after heat-induced antigen retrieval. Antibody concentration 10 ug/ml.