

Datasheet for ABIN2583447  
**anti-PGLYRP2 antibody (FITC)**[Go to Product page](#)

## 1 Image

## Overview

Quantity:	100 µg
Target:	PGLYRP2
Reactivity:	Human
Host:	Rabbit
Clonality:	Polyclonal
Conjugate:	This PGLYRP2 antibody is conjugated to FITC
Application:	ELISA, Western Blotting (WB), Immunohistochemistry (IHC), Immunohistochemistry (Paraffin-embedded Sections) (IHC (p))

## Product Details

Immunogen:	Recombinant human N-acetylmuramoyl-L-alanine amidase protein.  Type of Immunogen: Recombinant protein
Isotype:	IgG
Specificity:	Human PGLYRP2
Purification:	Caprylic acid and ammonium sulfate precipitation

## Target Details

Target:	PGLYRP2
Alternative Name:	PGLYRP2 ( <a href="#">PGLYRP2 Products</a> )
Background:	Name/Gene ID: PGLYRP2

## Target Details

---

Synonyms: PGLYRP2, HMFT0141, PGRPL, TagL, TagL-alpha, TAGL-like, PGLYRPL, PGRP-L, Tagl-beta

Gene ID: 114770

Pathways: [Activation of Innate immune Response](#), [Glycosaminoglycan Metabolic Process](#)

## Application Details

---

Application Notes: Approved: ELISA, IHC, IHC-P, WB

Usage: The applications listed have been tested for the unconjugated form of this product.  
Other forms have not been tested.

Comment: Target Species of Antibody: Human

Restrictions: For Research Use only

## Handling

---

Format: Liquid

Concentration: Lot specific

Buffer: PBS, pH 7.4, 0.03 % Proclin 300, 50 % glycerol.

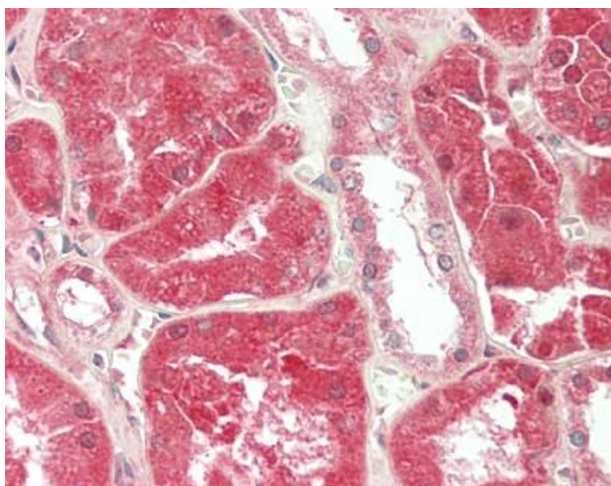
Preservative: ProClin

Precaution of Use: This product contains ProClin: a POISONOUS AND HAZARDOUS SUBSTANCE which should be handled by trained staff only.

Handling Advice: Avoid freeze-thaw cycles.

Storage: -20 °C, -80 °C

Storage Comment: Aliquot and store at -20°C or -80°C. Avoid freeze-thaw cycles.



#### Immunohistochemistry (Paraffin-embedded Sections)

**Image 1.** Human Kidney: Formalin-Fixed, Paraffin-Embedded (FFPE). This image was taken for the unconjugated form of this product. Other forms have not been tested.