



[Go to Product page](#)

Datasheet for ABIN2583581  
**anti-PHPT1 antibody (FITC)**

1 Image

Overview

Quantity:	100 µg
Target:	PHPT1
Reactivity:	Human
Host:	Rabbit
Clonality:	Polyclonal
Conjugate:	This PHPT1 antibody is conjugated to FITC
Application:	Western Blotting (WB), Immunohistochemistry (IHC), ELISA, Immunohistochemistry (Paraffin-embedded Sections) (IHC (p))

Product Details

Immunogen:	Recombinant human 14 kD phosphohistidine phosphatase protein. Type of Immunogen: Recombinant protein
Isotype:	IgG
Specificity:	Human PHPT1
Purification:	Caprylic acid and ammonium sulfate precipitation

Target Details

Target:	PHPT1
Alternative Name:	PHPT1 ( <a href="#">PHPT1 Products</a> )
Background:	Name/Gene ID: PHPT1

## Target Details

---

Synonyms: PHPT1, BA216L13.10, HSPC141, Phosphohistidine phosphatase 1, Protein janus-A homolog, RP11-216L13.10, Sex-regulated protein janus-a, PHP14, CGI-202

Gene ID: 29085

Pathways: [Positive Regulation of Peptide Hormone Secretion](#)

## Application Details

---

Application Notes: Approved: ELISA, IHC, IHC-P, WB

Usage: The applications listed have been tested for the unconjugated form of this product. Other forms have not been tested.

Comment: Target Species of Antibody: Human

Restrictions: For Research Use only

## Handling

---

Format: Liquid

Concentration: Lot specific

Buffer: PBS, pH 7.4, 0.03 % Proclin 300, 50 % glycerol.

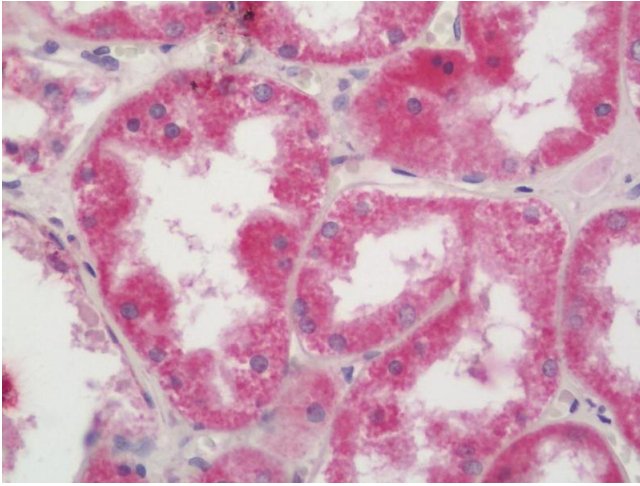
Preservative: ProClin

Precaution of Use: This product contains ProClin: a POISONOUS AND HAZARDOUS SUBSTANCE which should be handled by trained staff only.

Handling Advice: Avoid freeze-thaw cycles.

Storage: -20 °C, -80 °C

Storage Comment: Aliquot and store at -20°C or -80°C. Avoid freeze-thaw cycles.



#### Immunohistochemistry (Paraffin-embedded Sections)

**Image 1.** Human Kidney: Formalin-Fixed, Paraffin-Embedded (FFPE). This image was taken for the unconjugated form of this product. Other forms have not been tested.