

Datasheet for ABIN2584860
anti-MSTN antibody (FITC)[Go to Product page](#)

1 Image

Overview

Quantity:	100 µg
Target:	MSTN
Reactivity:	Human
Host:	Rabbit
Clonality:	Polyclonal
Conjugate:	This MSTN antibody is conjugated to FITC
Application:	Western Blotting (WB), Immunohistochemistry (IHC), ELISA, Immunohistochemistry (Paraffin-embedded Sections) (IHC (p))

Product Details

Immunogen:	Recombinant human Growth/differentiation factor 8 protein Type of Immunogen: Recombinant protein
Isotype:	IgG
Purification:	Caprylic acid and ammonium sulfate precipitation

Target Details

Target:	MSTN
Alternative Name:	MSTN / GDF8 / Myostatin (MSTN Products)
Background:	Name/Gene ID: MSTN Family: TGF beta

Target Details

Synonyms: MSTN, GDF8, MSLHP, Myostatin, GDF-8

Gene ID: 2660

Application Details

Application Notes: Approved: ELISA, IHC, IHC-P, WB

Usage: The applications listed have been tested for the unconjugated form of this product.
Other forms have not been tested.

Comment: Target Species of Antibody: Human

Restrictions: For Research Use only

Handling

Format: Liquid

Concentration: Lot specific

Buffer: PBS, pH 7.4, 0.03 % Proclin 300, 50 % glycerol.

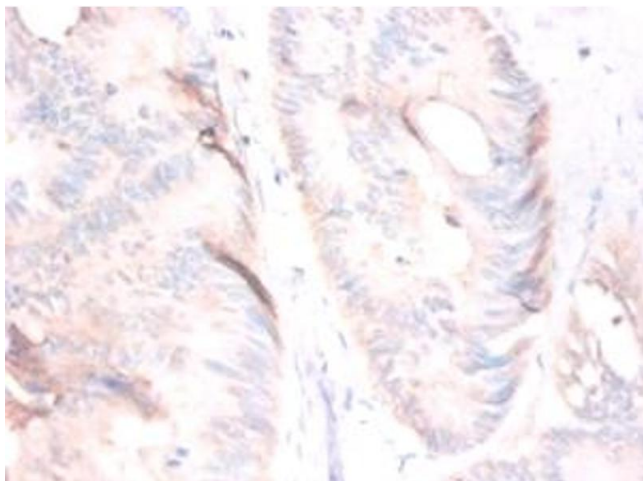
Preservative: ProClin

Precaution of Use: This product contains ProClin: a POISONOUS AND HAZARDOUS SUBSTANCE which should be handled by trained staff only.

Handling Advice: Avoid freeze-thaw cycles.

Storage: -20 °C, -80 °C

Storage Comment: Aliquot and store at -20°C or -80°C. Avoid freeze-thaw cycles.



Immunohistochemistry

Image 1. Immunohistochemistry of paraffin-embedded human colorectal carcinoma using MSTN / GDF8 / Myostatin antibody at dilution of 1:50. This image was taken for the unconjugated form of this product. Other forms have not been tested.