



Datasheet for ABIN2585898
anti-NEK2 antibody (AA 396-426)



[Go to Product page](#)

1 Image

Overview

Quantity:	200 µL
Target:	NEK2
Binding Specificity:	AA 396-426
Reactivity:	Human, Mouse
Host:	Rabbit
Clonality:	Polyclonal
Conjugate:	This NEK2 antibody is un-conjugated
Application:	Western Blotting (WB), Immunohistochemistry (IHC), Immunofluorescence (IF), Immunohistochemistry (Paraffin-embedded Sections) (IHC (p))

Product Details

Brand:	IHC-plus™
Specificity:	This NEK2 antibody is generated from rabbits immunized with a KLH conjugated synthetic peptide between 396-426 amino acids from the Central region of human NEK2.
Purification:	Ammonium sulfate precipitation

Target Details

Target:	NEK2
Alternative Name:	NEK2 (NEK2 Products)
Background:	Name/Gene ID: NEK2 Subfamily: NEK

Target Details

Family: Protein Kinase

Synonyms: NEK2, NIMA-related kinase 2, NEK2A, HsPK21, NimA-like protein kinase 1, NLK1, HSPK 21, NimA-related protein kinase 2

Gene ID: 4751

Pathways: [M Phase](#)

Application Details

Application Notes: Approved: IF (1:25), IHC, IHC-P (1:100), WB (1:1000)

Comment: Target Species of Antibody: Human

Restrictions: For Research Use only

Handling

Format: Liquid

Concentration: Lot specific

Buffer: PBS, 0.09 % sodium azide

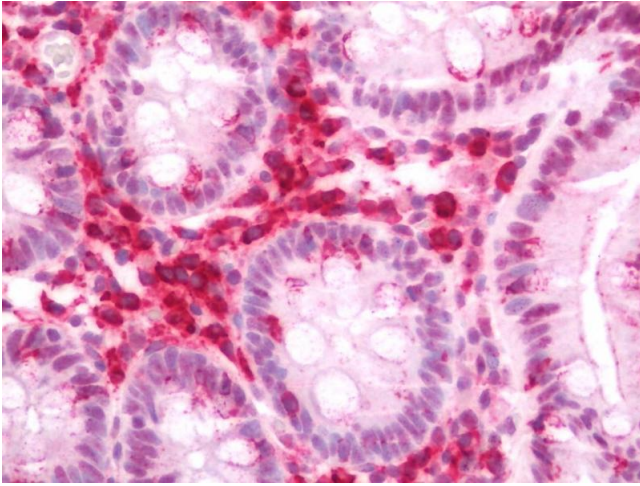
Preservative: Sodium azide

Precaution of Use: This product contains Sodium azide: a POISONOUS AND HAZARDOUS SUBSTANCE which should be handled by trained staff only.

Storage: 4 °C, -20 °C

Storage Comment: Maintain refrigerated at 2-8°C for up to 6 months. For long term storage store at -20°C.

Expiry Date: 6 months



Immunohistochemistry

Image 1. Human Colon: Formalin-Fixed, Paraffin-Embedded (FFPE)