



[Go to Product page](#)

Datasheet for ABIN2586445

anti-LTA4H antibody

1 Image

Overview

Quantity:	50 µL
Target:	LTA4H
Reactivity:	Human, Rat, Dog
Host:	Mouse
Clonality:	Monoclonal
Conjugate:	This LTA4H antibody is un-conjugated
Application:	Western Blotting (WB), Immunohistochemistry (IHC), Immunohistochemistry (Paraffin-embedded Sections) (IHC (p))

Product Details

Brand:	IHC-plus™
Immunogen:	Protein expressed in 293T cell transfected with human LTA4H expression vector. Type of Immunogen: Transfected Cells
Clone:	8F4
Isotype:	IgG2a
Specificity:	Human LTA4H / LTA4
Purification:	Protein A/G purified

Target Details

Target:	LTA4H
---------	-------

Target Details

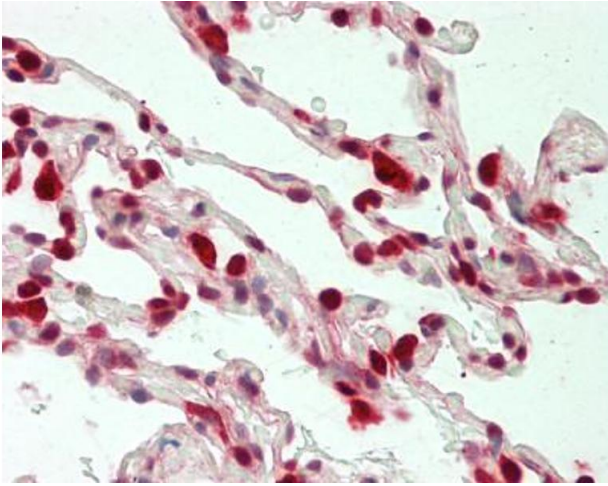
Alternative Name:	LTA4H / LTA4 (LTA4H Products)
Background:	Name/Gene ID: LTA4H Subfamily: Metallopeptidase M1 Family: Exopeptidase Synonyms: LTA4H, Leukotriene A(4) hydrolase, Leukotriene A4 hydrolase, Leukotriene A-4 hydrolase, LTA-4 hydrolase, LTA4
Gene ID:	4048

Application Details

Application Notes:	Approved: IHC, IHC-P (1:50, 10 µg/mL), WB (1:2000) Usage: Concentration: 0.5-1.0 mg/mL (Lot dependent)
Comment:	Target Species of Antibody: Human
Restrictions:	For Research Use only

Handling

Format:	Liquid
Concentration:	Lot specific
Buffer:	PBS, pH 7.3, 1 % BSA, 50 % glycerol, 0.02 % sodium azide. Sourced from ascites.
Preservative:	Sodium azide
Precaution of Use:	This product contains Sodium azide: a POISONOUS AND HAZARDOUS SUBSTANCE which should be handled by trained staff only.
Handling Advice:	Minimize freezing and thawing.
Storage:	-20 °C
Storage Comment:	Store at -20°C. Avoid freeze-thaw cycles.



Immunohistochemistry (Paraffin-embedded Sections)

Image 1. Human Lung: Formalin-Fixed, Paraffin-Embedded (FFPE)