

Datasheet for ABIN2586520
anti-LY6G6F antibody (AA 51-100)[Go to Product page](#)

1 Image

Overview

Quantity:	100 µL
Target:	LY6G6F
Binding Specificity:	AA 51-100
Reactivity:	Human, Monkey
Host:	Rabbit
Clonality:	Polyclonal
Conjugate:	This LY6G6F antibody is un-conjugated
Application:	Western Blotting (WB), Immunohistochemistry (IHC), Immunohistochemistry (Paraffin-embedded Sections) (IHC (p))

Product Details

Brand:	IHC-plus™
Immunogen:	Synthetic peptide located between aa51-100 of human LY6G6F (Q7Z5H2, NP_001003693). Percent identity by BLAST analysis: Human, Gorilla, Gibbon, Monkey (100%). Type of Immunogen: Synthetic peptide
Isotype:	IgG
Specificity:	Human LY6G6F
Purification:	Protein A purified

Target Details

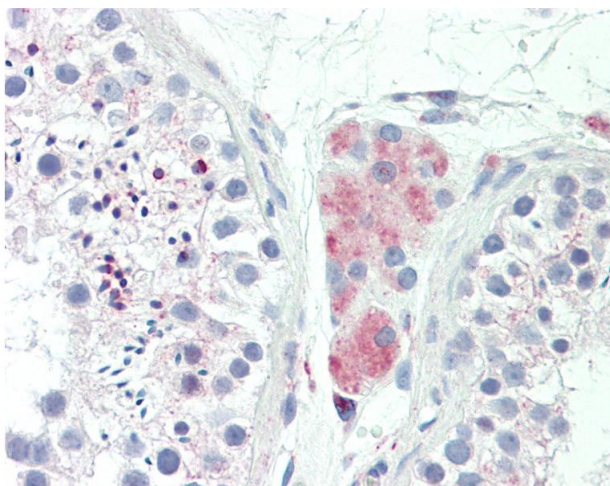
Target:	LY6G6F
Alternative Name:	LY6G6F (LY6G6F Products)
Background:	Name/Gene ID: LY6G6F Synonyms: LY6G6F, G6f, NG32, C6orf21
Gene ID:	259215
NCBI Accession:	NP_001003693

Application Details

Application Notes:	Approved: IHC, IHC-P (10 µg/mL), WB (1.25 µg/mL)
Comment:	Target Species of Antibody: Human
Restrictions:	For Research Use only

Handling

Format:	Lyophilized
Reconstitution:	After adding water, will consist of PBS buffer with 2 % sucrose
Concentration:	Lot specific
Buffer:	Lyophilized from PBS with 2 % sucrose
Handling Advice:	Avoid repeat freeze-thaw cycles.
Storage:	4 °C,-20 °C
Storage Comment:	Long term: -20°C, the use of 50% glycerol is recommended if storing aliquots in -20°C for long term use (up to 1 year) Short term (less than 1 week): 4°C. Avoid freeze-thaw cycles.



Immunohistochemistry

Image 1. Anti-LY6G6F antibody IHC staining of human testis. Immunohistochemistry of formalin-fixed, paraffin-embedded tissue after heat-induced antigen retrieval. Antibody concentration 10 ug/ml. This image was taken for the unconjugated form of this product ...