

Datasheet for ABIN2586603
anti-LOX antibody (Biotin)[Go to Product page](#)

1 Image

Overview

Quantity:	100 µg
Target:	LOX
Reactivity:	Rat
Host:	Rabbit
Clonality:	Polyclonal
Conjugate:	This LOX antibody is conjugated to Biotin
Application:	Western Blotting (WB), ELISA, Immunohistochemistry (IHC), Immunohistochemistry (Paraffin-embedded Sections) (IHC (p))

Product Details

Immunogen:	Recombinant Rat Protein-lysine 6-oxidase protein. Type of Immunogen: Recombinant protein
Isotype:	IgG
Specificity:	Rat Lysyl Oxidase / LOX
Purification:	Caprylic acid and ammonium sulfate precipitation

Target Details

Target:	LOX
Alternative Name:	Lysyl Oxidase / LOX (LOX Products)
Background:	Name/Gene ID: LOX

Target Details

Synonyms: LOX, Lysyl oxidase, Protein-lysine 6-oxidase

Gene ID: 4015

Pathways: [SARS-CoV-2 Protein Interactome](#)

Application Details

Application Notes: Approved: ELISA, IHC, IHC-P, WB

Usage: The applications listed have been tested for the unconjugated form of this product.
Other forms have not been tested.

Comment: Target Species of Antibody: Rat

Restrictions: For Research Use only

Handling

Format: Liquid

Concentration: Lot specific

Buffer: PBS, pH 7.4, 0.03 % Proclin 300, 50 % glycerol.

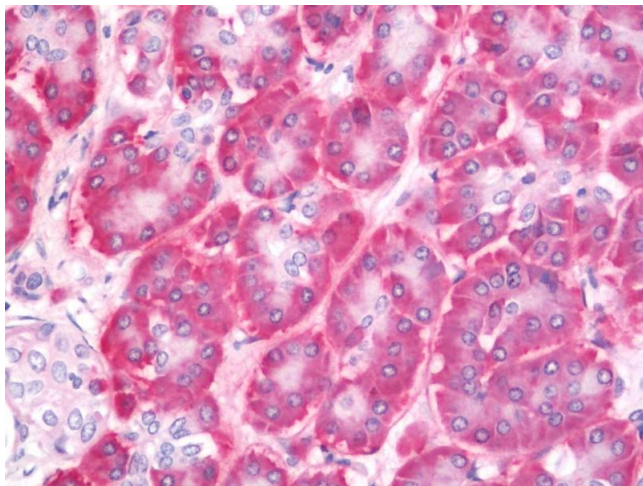
Preservative: ProClin

Precaution of Use: This product contains ProClin: a POISONOUS AND HAZARDOUS SUBSTANCE which should be handled by trained staff only.

Handling Advice: Avoid freeze-thaw cycles.

Storage: -20 °C, -80 °C

Storage Comment: Aliquot and store at -20°C or -80°C. Avoid freeze-thaw cycles.



Immunohistochemistry

Image 1. Human Pancreas: Formalin-Fixed, Paraffin-Embedded (FFPE). This image was taken for the unconjugated form of this product. Other forms have not been tested.