

Datasheet for ABIN2586831
anti-MAMSTR antibody (AA 9-37)[Go to Product page](#)

1 Image

Overview

Quantity:	200 µL
Target:	MAMSTR
Binding Specificity:	AA 9-37
Reactivity:	Human
Host:	Rabbit
Clonality:	Polyclonal
Conjugate:	This MAMSTR antibody is un-conjugated
Application:	Western Blotting (WB), Flow Cytometry (FACS), Immunohistochemistry (IHC), ELISA, Immunohistochemistry (Paraffin-embedded Sections) (IHC (p))

Product Details

Isotype:	IgG
Specificity:	This MAMSTR antibody is generated from rabbits immunized with a KLH conjugated synthetic peptide between 9-37 amino acids from the N-terminal region of human MAMSTR.
Purification:	Affinity purified

Target Details

Target:	MAMSTR
Alternative Name:	MAMSTR (MAMSTR Products)
Background:	Name/Gene ID: MAMSTR

Target Details

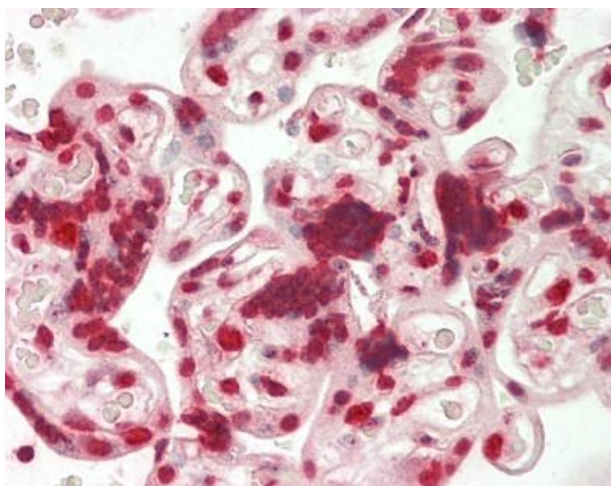
	Synonyms: MAMSTR, MASTR
Gene ID:	284358
Pathways:	Regulation of Muscle Cell Differentiation , Skeletal Muscle Fiber Development

Application Details

Application Notes:	Approved: ELISA (1:1000), Flo (1:10 - 1:50), IHC, IHC-P (5 µg/mL), WB (1:100 - 1:500)
Comment:	Target Species of Antibody: Human
Restrictions:	For Research Use only

Handling

Format:	Liquid
Concentration:	Lot specific
Buffer:	PBS, pH 7.2, 0.09 % sodium azide.
Preservative:	Sodium azide
Precaution of Use:	This product contains Sodium azide: a POISONOUS AND HAZARDOUS SUBSTANCE which should be handled by trained staff only.
Handling Advice:	Aliquot to avoid repeated freezing and thawing.
Storage:	4 °C, -20 °C
Storage Comment:	May be stored at 4°C for short-term only. Aliquot to avoid freeze-thaw cycles. Store at -20°C. Aliquots are stable for 1 year.



Immunohistochemistry (Paraffin-embedded Sections)

Image 1. Human Placenta: Formalin-Fixed, Paraffin-Embedded (FFPE). This image was taken for the unconjugated form of this product. Other forms have not been tested.